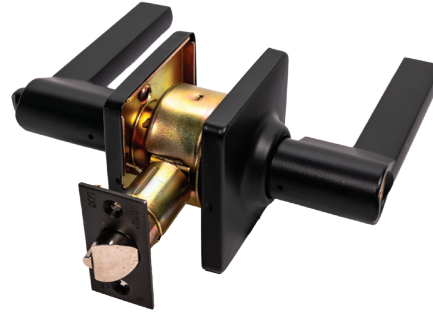
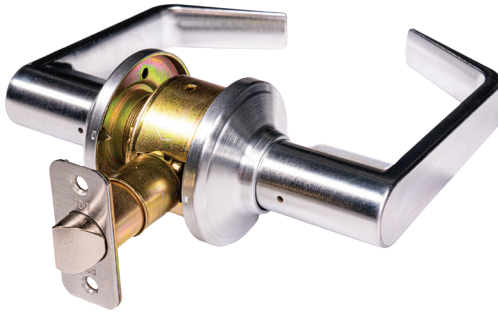


Architectural Submittal Sheet



Specifications

FOR DOORS:	• 1-3/8" to 1-3/4" thick • Preset for 1-3/4" door
APPLICATION:	• Fits standard 160 and 161 door prep • No additional thru-bolt
BACKSET:	• Adjustable - 2-3/8" - 2-3/4" (Optional UL Listed fire latch has fixed backsets, 2-3/8" or 2-3/4")
CHASSIS:	• Heavy-gauge cold rolled steel mechanism • Dichromated for corrosion resistance
FRONT:	• 1" face width, 1/4" radius with square corner filler for 1-1/8" width.
STRIKE:	• Full Lip Strike standard, ASA and T-Strike optional
LEVERS:	• Philadelphia, Boston, Miami, Memphis and Orlando
ROSE:	• 2-9/16" Diameter Round Rose, 2-15/16" Square Rose
LATCHBOLT:	• Adjustable - 2-3/8" - 2-3/4" latch standard, Optional UL fire-rated 2-3/4" or 2-3/8" fixed latchbolts are available.
HAND:	• Non-handed, for Memphis, swap levers to rehand.
TRIM:	• Solid diecast PHL, BSN, MIA, MEM and ORL levers • Wrought brass roses • Concealed screws
KEYS:	• Two (2) per Lock
KEYWAYS:	• SCC standard (Schlage C Compatible) • Also available in keyways of other manufacturers
CYLINDER:	• 6-pin Brass Insert Cylinder keyed to 5-pins • Standard High Security and UL437 Cylinders Available
KEYING:	• Options: MK, CMK or GMK / Zero Bitted (KO), Keyed Different (KD) or Keyed Alike (KA) • Can be keyed into existing master key systems
FINISHES:	• 605 (Bright Brass), 613 (Oil Rubbed Bronze), 619 (Satin Nickel), 622 (Flat Black), 625 (Bright Chromium), 626 (Satin Chrome)
COMPLIANCES:	• Complies with ADA (Americans with Disabilities Act) and ICC/ANSI 117.1 for Accessible and Usable Buildings • Meets requirements of the Buy American Act.
CERTIFICATIONS, LISTINGS:	• Entry function and optional fixed backset latch only. – Certified to ANSI/BHMA 156.2, Grade 2 (fixed backset latch only). – UL listed for single doors up to 40" x 8'0" when ordered with UL latchbolt, contact factory for details.
WARRANTY:	• Three (3) year Limited Warranty

Levers



Philadelphia



Boston



Miami



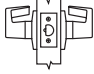

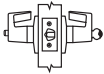

Memphis



Orlando

SF SERIES Grade 2 Cylindrical Lock

PDQ Functions

FUNCTION	FUNCTION NUMBER	INSIDE OUTSIDE	DESCRIPTION	ANSI NUMBER
NON KEYED				
Passage	SF126		<ul style="list-style-type: none"> Latchbolt operated by lever from either side at all times 	F75
Privacy Bedroom Bathroom	SF176		<ul style="list-style-type: none"> Latchbolt operated by lever from either side or emergency release in outside lever Outside lever locked by push button on inside Outside lever unlocked by emergency release from outside, rotating inside lever, or closing door 	F76
KEYED				
Entrance	SF116	 <p>Fixed backset, fire rated, BHMA latch included.</p>	<ul style="list-style-type: none"> Latchbolt operated by lever from either side or key in outside lever Outside lever locked by push/turn button on inside When outside lever is locked by push button on inside – key from outside, or rotating inside lever unlocks outside lever When outside lever is locked by pushing and turning the button on the inside, key from outside or rotating inside lever retracts latch but does not unlock outside lever Deadlocking (guarded) latchbolt 	F109
DUMMY				
Single Dummy	SF211		<ul style="list-style-type: none"> Pull lever one side No mechanical operation 	—

Trim



Round Rose



Square Rose

Finishes



605 (US3)
Bright Brass



613 (US10B)
Oil Rubbed Bronze



619 (US15)
Satin Nickel



622 (US19)
Flat Black



625 (US26)
Bright Chromium



626 (US26D)
Satin Chromium

SF SERIES Grade 2 Cylindrical Lock

Latches

Non-Fire Rated Adjustable Latch (Standard on Non-Keyed Functions)

CODE	DESCRIPTION
ADJ	Adjustable non-fire rated latch, 1" face width with 1/4" radius corner with 1-1/8" square corner filler

Optional UL Fire Rated/BHMA Certified Fixed Backset Latch (Standard on Keyed Functions)

CODE	DESCRIPTION
234	Fixed 2-3/4" backset fire rated latch, Square Corner 1-1/8" face
238	Fixed 2-3/8" backset fire rated latch, Square Corner 1" face
238R	Fixed 2-3/8" backset fire rated latch, Radius Corner 1" face