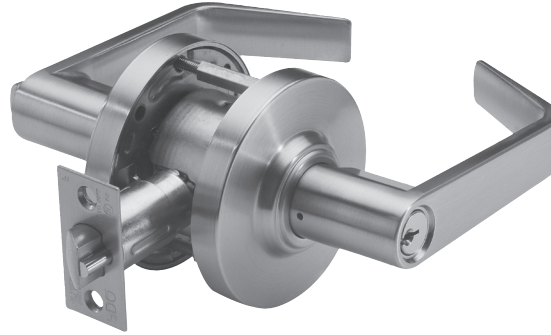


Architectural Submittal Sheet

Typical Applications

- Assisted Living
- Hospitality
- Houses of Worship
- Industrial
- Medium/Light Commercial Installations
- Multi-family
- Offices
- Retail



Specifications

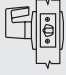
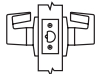
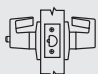
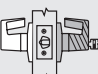
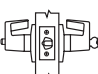
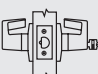
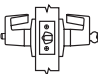



| | |
|---|---|
| FOR DOORS: | • 1-3/8" to 1-3/4" thick • Preset for 1-3/4" door |
| APPLICATION: | • Through door thru-bolting • Fits standard 160 and 161 Door prep • Thru-Bolts are removable |
| BACKSET: | • 2-3/4" standard • 2-3/8", 3-3/4", 5" optional |
| CHASSIS: | • Heavy-gauge cold rolled steel mechanism • Dichromated for corrosion resistance |
| FRONT: | • 2-1/4" x 1-1/8" or 2-1/4" x 1" • Beveled 1/8" on 2" • Stainless Steel or Wrought Brass |
| STRIKE: | • ASA standard • T-Strike or Full Lip Strike optional • Stainless Steel or Wrought Brass |
| LEVERS: | • Philadelphia, Boston, Miami, Memphis, Orlando |
| ROSE: | • 3-3/8" DIA Wrought |
| LATCHBOLT: | • 1/2" Throw |
| HAND: | • Non-handed (Except Memphis) |
| TRIM: | • Solid diecast PHL, BSN, MIA, MEM and ORL Levers • Wrought Brass Roses • Concealed Screws |
| KEYS: | • Two (2) per Lock |
| KEYWAYS: | • SCC standard (Schlage C Compatible) • Also available in keyways of other manufacturers |
| INTERCHANGEABLE CORE: | • 6 or 7-pin • Compatible with Best, Falcon & Arrow. Not available with Memphis lever. |
| CYLINDER: | • 6-pin Brass Insert Cylinder keyed to 5-pins • Standard High Security and UL437 Cylinders Available |
| KEYING: | • Options: MK, CMK or GMK / Zero Bitted (KO), Keyed Different (KD) or Keyed Alike (KA) • Can be keyed into existing master key systems |
| FINISHES: | • 605 (US3), 613 (US10B), 619 (US19), 622 (19D), 626 (US26D) |
| CERTIFICATIONS, LISTINGS, COMPLIANCES: | • UL listed for 3 hrs, for single doors up to 4'0" x 8'0" • Certified to ANSI/BHMA A156.2 Grade 2 • Complies with ADA (Americans with Disabilities Act) and ICC/ANSI 117.1 for Accessible and Usable Buildings • Meets requirements of the Buy American Act. |
| WARRANTY: | • Five (5) year Limited Warranty |

‡ Available with antimicrobial coating, technology that is known to inhibit the growth of microbes.

SD SERIES Grade 2 Standard Duty Cylindrical Lock

PDQ Functions

| FUNCTION | FUNCTION NUMBER | INSIDE OUTSIDE | DESCRIPTION | ANSI NUMBER |
|--------------------------|-----------------|---|---|-------------|
| NON KEYED | | | | |
| Communicating | SD125 |  | <ul style="list-style-type: none"> Latchbolt operated by inside lever Blank plate outside Minimum clearance of 1-1/2" between doors Deadlocking (guarded) latchbolt | — |
| Passage | SD126 |  | <ul style="list-style-type: none"> Latchbolt operated by lever from either side at all times | F75 |
| Privacy Bedroom Bathroom | SD176 |  | <ul style="list-style-type: none"> Latchbolt operated by lever from either side or emergency release in outside lever Outside lever locked by push button on inside Outside lever unlocked by emergency release from outside, rotating inside lever, or closing door | F76 |
| KEYED | | | | |
| Storeroom | SD115 |  | <ul style="list-style-type: none"> Latchbolt operated from outside by key, inside by lever Outside lever always fixed Inside lever always free Deadlocking (guarded) latchbolt | F86 |
| Entrance | SD116 |  | <ul style="list-style-type: none"> Latchbolt operated by lever from either side or key in outside lever Outside lever locked by push/turn button on inside When outside lever is locked by push button on inside – key from outside, or rotating inside lever unlocks outside lever When outside lever is locked by pushing and turning the button on the inside, key from outside or rotating inside lever retracts latch but does not unlock outside lever Deadlocking (guarded) latchbolt | F109 |
| Classroom | SD148 |  | <ul style="list-style-type: none"> Latchbolt operated by lever from either side Outside lever locked or unlocked by key from outside Inside lever always operates latch Deadlocking (guarded) latchbolt | F84 |
| Entry | SD182 |  | <ul style="list-style-type: none"> Latchbolt operated by lever from either side or key in outside lever Outside lever locked by push button on inside Outside lever unlocked by key from outside, and rotating inside lever | F82 |
| DUMMY | | | | |
| Single Dummy | SD211 |  | <ul style="list-style-type: none"> Pull lever one side No mechanical operation | — |



SD SERIES Grade 2 Standard Duty Cylindrical Lock

Levers



Philadelphia



Boston



Miami



Memphis
(Specify Handing)



Orlando

Finishes



605 (US3)
Bright Brass



613 (US10B)
Oil Rubbed Bronze



619 (US15)
Satin Nickel



622 (US19)
Flat Black



626 (US26D)
Satin Chromium

Options

| CODE | DESCRIPTION |
|-----------|----------------|
| SF | Split Finishes |
| DB | Dust Box |

Accessories

| DESCRIPTION |
|--|
| Electric Strike for SD Locks (U.L. Listed) |