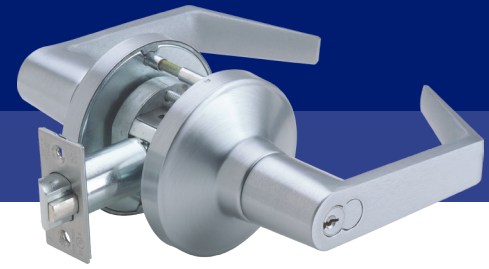


GRADE 1



- Super Strong — Rigid locked lever — No free wheeling lever or clutch
- 41 Degree Lever Rotation — less wear/longer life, most ADA Compliant on the market

Product Specifications



FOR DOORS:	• 1-3/4" to 2-1/4" thick • Preset for 1-3/4" door
APPLICATION:	• Secure installation using a through bolting process
DOOR PREP:	• Standard ANSI/BHMA A156.115 (161 plus through bolt holes) for Cylindrical Locks
BACKSET:	• 2-3/4" Standard. 3-3/4" and 5" Optional (Ordered from factory only)
CHASSIS:	• Heavy duty pressure cast, investment cast, chromated cold rolled steel and stainless steel mechanism. Billet Steel spindles for locking functions
FRONT:	• 2-1/4" x 1-1/8" • Stainless Steel or Wrought Brass • Beveled 1/8" in 2"
STRIKE:	• ASA standard • T-Strike or Full Lip Strike optional • Stainless Steel or Wrought Brass
ROSE:	• 3-3/8" DIA Wrought
LATCHBOLT:	• 9/16" Throw Deadlocking • Anti-friction
HAND:	• Non-handed
TRIM:	• Solid diecast PHL, BSN or MIA Levers • 41° Lever Rotation Standard with 2-3/4" backset • Wrought Brass Roses, Concealed Screws • 65° Lever Rotation Standard with 3/4" latch for double doors (Ordered from factory only) and all 3-3/4" and 5" backsets (Ordered from factory only)
KEYING:	• Keyed to your needs , Keys, keyway, SFIC core, LFIC Schlage only, cylinder and keying information on pages 36-37.
FINISHES:	• 605 (US3), 606 (US4), 612 (US10), 613 (US10B), 619 (US15), 622 Flat Black, 625 (US26), 626 (US26D), Optional Antimicrobial Coating
CASE QUANTITY:	• 6 locksets
COUNTRY OF ORIGIN:	• Proudly Assembled in the U.S.A. with U.S. and foreign material. Meets requirements of the Buy American Act
WARRANTY:	• Twenty-five (25) year Limited Warranty



Electrified Options: • Electronic Locking/Unlocking (Fail Secure/Fail Safe) • Request To Exit • Input voltage 12/24V both AC and DC

Listings and Certifications

- CERTIFICATIONS, LISTINGS, COMPLIANCES:**
- UL/CUL 10C listed for 3 hrs, for single doors up to 4'0" x 8'0" • Certified to ANSI/BHMA A156.2, Grade 1
 - California Education Code Compliant (Functions GT135, GT135LED, GT145)
 - Federal Specification FF-H-10C (Superseded by A156.2) • Approved for Florida HVHZ (High Velocity Hurricane Zone). PDQ Product Approval: FL 21376. Design load rating: ± 70.0 PSF for single door (3' x 7')
 - Complies with ADA (Americans with Disabilities Act) and ICC/ANSI 117.1 for Accessible and Usable Buildings

Levers/Trim



Philadelphia



Boston



Miami

Finishes



605 (US3)
Bright Brass



606 (US4)
Satin Brass



612 (US10)
Satin Bronze



613 (US10B)
Oil Rubbed Bronze



619 (US15)
Satin Nickel



622 (US19)
Flat Black



625 (US26)
Bright Chromium



626 (US26D)
Satin Chromium