



# 6300/6400 Series

Wide Stile/Narrow Stile Architectural Exit Device

\*Patent Pending

# Table of Contents

## 3 Introducing the 6300/6400 Series Architectural Exit Devices

### 4 How to Order Exit Device

6300/6400 Exit Devices

### 5 Rim Devices

### 6 Surface Vertical Rod Devices

### 7 Concealed Vertical Rod Devices

### 8 Mortise Device

### 9 Dummy Device

### 10 Device Ordering Options

### 11 Rim Strike Options

## 12 Introducing the 6300/6400 Series Trims

### 13 How to Order Trims

### 14 Exit Device Trims

### 21 Trim Compatibility

### 23 Electrified Options

### 27 Cylinders & Keying

### 29 9300 Mullion

### 31 Additional Information

### 31 Fire Ratings

### 32 Device Dimensions

### 33 Trim Dimensions

### 34 Door Width Chart/Cross Reference

### 35 Finishes

## Customer Support and Information



800.441.9692



help@pdqlocks.com



www.pdqlocks.com



www.youtube.com/user/PDQLocks

## Ordering

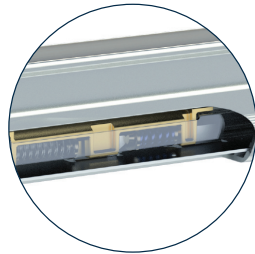
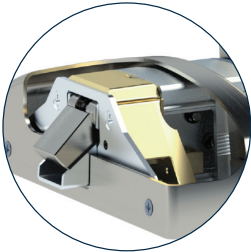
orders@pdqlocks.com

# Introducing the 6300/6400 SERIES Architectural Exit Device

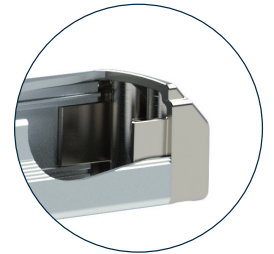
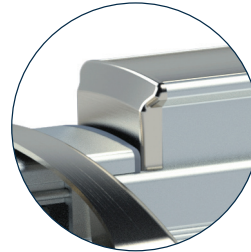


## Highlights

Chassis support is cast for high strength.



Push bar has angled ends and is nearly flush when dogged.



Flush end cap is standard, heavy duty engineered casting keys into the rail for ultimate pry resistance.

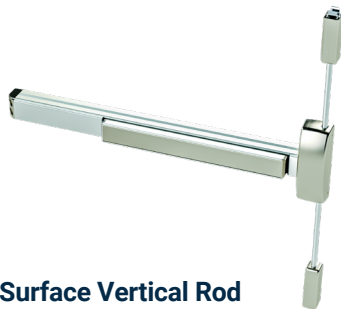
Cush spring quiets device in both directions. Compression spring returns the touch bar providing more reliability than a torsion type spring.

## Features

- Rugged, reliable, flexible, and simple design
- Designed & Assembled in Lancaster, PA
- Patent Pending
- Quiet operation - large heavy-duty spring cushion quiets both the compression/extension of the push bar
- Internal compression spring ensures long lasting push bar return
- Engineered strong and overbuilt for the most demanding environments
- Durable, heavy-duty flush end cap is standard and resist prying
- Stands up to cart abuse, heavy-duty flush end cap and tapered push bar designed to deflect hits and minimize damage
- Simple field door prep and installation
- Dogging holds bar in a retracted position nearly flush with head cover and rail
- Hex Key provided to dog/release the device
- No exposed screws on back of bar
- True 2-3/4" backset (with 5/8" frame stop and 1/8" door gap)
- Wood and machine screws included with each device
- Devices and trim are non-handed
- Ten (10) year warranty



**Rim**  
6300R / 6400R



**Surface Vertical Rod**  
6300V / 6400V



**Concealed Vertical Rod**  
6300C / 6400C



**Mortise**  
6300M

# 6300/6400 Exit Device

## How to Order

| Series   | For Door Width   | Device Type   | Rating  | Finish  | Options  | Electrified Options  |
|--|--|---|---|---|--|--|
| <b>63</b>  | <b>00</b>  | <b>R</b>  | <b>--</b>   | <b>630</b>  | <b>--</b>  | <b>--</b>  |
| <b>63</b> - Wide Stile Device<br><b>64</b> - Narrow Stile Device | <b>00</b> - 36" Door<br><b>10</b> - 48" Door<br><b>20</b> - 24" Door | <b>R</b> - Rim Device<br><b>V</b> - SVR Device<br><b>C</b> - CVR Device<br><b>D</b> - Dummy Device<br><b>M</b> - Wide Stile Mortise Device* | <b>Blank</b> - Panic Rated<br><b>F</b> - Fire Rated | <b>605</b> - Bright Brass<br><b>606</b> - Satin Brass<br><b>613</b> - Dark Bronze<br><b>622</b> - Satin Black<br><b>625</b> - Bright Chrome<br><b>626</b> - Satin Chrome<br><b>630</b> - Satin Stainless<br><b>630F</b> - Stainless | <b>Dogging</b> (Panic Rated Only):<br><b>Blank</b> - Hex Key Dogging<br><b>CD</b> - Cylinder Dogging<br><b>LD</b> - Less Dogging*<br><br><b>Strikes:</b><br><b>BS</b> - Blade Stop Strike (Rim)<br><b>DD</b> - Double Door Strike (Rim)<br><br><b>CWD</b> - CVR Wood Door<br><b>LBR</b> - Less Bottom Rod (SVR/CVR)<br><b>LBR-FP</b> - Less Bottom Rod with Fire Pin (SVR/CVR)<br><b>WS</b> - Windstorm Rated (Rim & SVR)<br><b>EC</b> - End Cap Cover<br><b>TLA</b> - Head Cover<br><b>SNB</b> - Sex Nuts & Bolts<br><b>AM</b> - Anti-Microbial<br><b>SK</b> - Shim Kit<br><b>SHS</b> - Security Head Screws<br><br><b>7</b> - 7' door (default)<br><b>8</b> - 8' door<br><b>10</b> - 8'-10' Door | <b>MLR</b> - Motorized Latch Retr.<br><b>AL</b> - Alarm Kit*<br><b>SS</b> - Signal Switch on touch bar<br><b>LM</b> - Latchbolt Monitor<br><b>ISMC</b> - Industry Standard Molex Connector<br><b>ALHW</b> - Alarm kit hard wired |

\*Mortise in wide stile device only

\*Multiple Selections Allowed  
 \*Dogging options only apply to Panic Rated

\*MLR can be combined with LM & SS  
 \*AL can be combined with LM  
 \*MLR and AL cannot be combined  
 \*ISMC available on all  
 \*AL - specify handing

## Cylinder Dogging Part Number Additions

| CYLINDER TYPE   | KEYWAY  | KEYING   |
|---|---|--|
| <b>D</b>  | <b>SCC</b>  | <b>KD</b>  |
| <b>D</b> Default<br><b>L</b> Less Cylinder<br><b>SF6</b> Lock is SFIC prepped w/ 6 pin core<br><b>SF7</b> Lock is SFIC prepped w/ 7 pin core<br><b>SFL</b> Lock is SFIC prepped but less core<br><b>SFC</b> Lock is SFIC prepped w/ construction core<br><b>SFP</b> Lock is SFIC prepped w/ plastic construction core<br><b>LF6</b> Lock is Schlage LFIC prepped w/ Schlage core<br><b>LFL</b> Lock is Schlage LFIC prepped but less core<br><b>LFC</b> Lock is Schlage LFIC prepped w/ construction core<br><br>*Cores sold separately - option only specifies factory installation<br>*Cylinder only needs to be specified for cylinder dogging | <b>SCC</b> - Schlage C<br><b>OTHERS AVAILABLE</b> | <b>KD</b> - Keyed Different<br><b>KA</b> - Keyed Like<br><b>K0</b> - Zero Bitted<br><b>MK</b> - Master Keyed<br><b>CMK</b> - Construction Keyed<br><b>GMK</b> - Grand Master Keyed |

| 24" DEVICE          |
|---------------------|
| No cut              |
| No electric options |

# Rim Devices

## 6300R Wide Stile/6400R Narrow Stile

### Panic & Fire Rated

**6300R/RF** - Wide Stile Rim exit device with 3/4" pullman latch. Use for wide stile single door applications or for double door applications with a mullion.

**6400R/RF** - Narrow Stile Rim exit device with 3/4" pullman latch. Use for narrow stile single door applications or for double door applications with a mullion. Can also be used when a narrow look is desired.



### Specifications

|   |  |
|---|--|
| <b>Rail</b>   | • Extruded aluminum • Specify 630F for full stainless surfaces (roll formed)   |
| <b>Latch</b>  | • Stainless steel dead locking with 3/4" throw   |
| <b>Hand</b>   | • Device is non-handed • Trim is non-handed or field reversible  |
| <b>Dogging</b>  | • Hex key dogging standard • Cylinder dogging optional • Dogging not available for fire labeled devices  |
| <b>Minimum Stile Width</b>                            | • 6300 - 3-1/2" • 6400 - 2-1/8"  |
| <b>Door Thickness</b>                                 | • 1-3/4" - 2" (Consult factory for other)  |
| <b>Door Width</b>                                     | • 24", 36", 48" standard   |
| <b>Door Height</b>                                    | • Panic - Up to 10' • Fire - See fire ratings charts page 26   |
| <b>Strike Options</b>                                 | • Default roller • Blade stop • Double door • Windstorm/Fire Mullion - Panic Mullion uses standard roller strike   |
| <b>Finishes</b>                                       | • 605 - Polished Brass, 606 - Satin Brass, 613 - Dark Bronze, 622 - Flat Black, 626 - Satin Chrome, 630 - Satin Stainless Steel, 630F - Full Satin Stainless Surfaces<br>• Optional Anti Microbial Coating available on 626, 630 & 630F  |
| <b>Fasteners</b>                                      | • Includes machine and wood screws • SNB Optional  |
| <b>Warranty</b>                                       | • Ten (10) year limited warranty   |
| <b>Electrified Options</b>                            | • Motorized Latch Retraction • Request to Exit/Signal Switch • Alarmed Exit<br>• Latch Bolt Monitor • ISMC Connectors  |
| <b>Certifications:<br/>Compliances:<br/>Listings:</b> | • Listed for UL 305 "Panic", listed for UL 10C "Fire Exit Hardware" up to 3 hours.<br>• Certified to ANSI/BHMA A156.3 Grade 1<br>• FL #40297 +60/-65 psf 4080 16ga Single<br>• FL #40297 +50/-50 psf 4080 18ga Single<br>• Complies with ADA (Americans with Disabilities Act) and ICC/ANSI 117.1 for Accessible and Usable Buildings<br>• Meets requirements of the BAA as a COTS product manufactured in the United States |

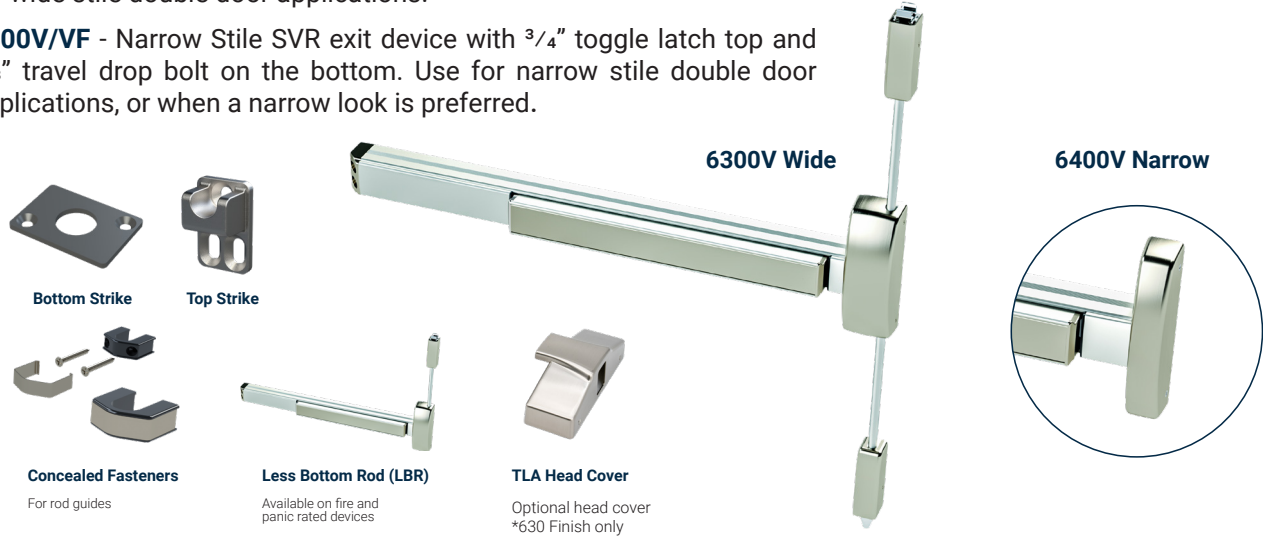
# Surface Vertical Rod Device

## 6300V Wide Stile/6400V Narrow Stile

### Panic & Fire Rated

**6300V/VF** - Wide Stile SVR exit device with 3/4" toggle latch top, and 5/8" travel drop bolt on the bottom. Use for wide stile double door applications.

**6400V/VF** - Narrow Stile SVR exit device with 3/4" toggle latch top and 5/8" travel drop bolt on the bottom. Use for narrow stile double door applications, or when a narrow look is preferred.



### Specifications

|   |   |
|---|---|
| <b>Rail</b>   | • Extruded aluminum • Specify 630F for full stainless surfaces (roll formed)  |
| <b>Latch</b>  | • Top - Stainless Steel 3/4" toggle • Bottom - 5/8" Travel Drop Bolt • Less bottom rod option   |
| <b>Hand</b>   | • Device is non-handed • Trim is non-handed or field reversible   |
| <b>Dogging</b>  | • Hex key dogging standard • Cylinder dogging optional • Dogging not available for fire labeled devices   |
| <b>Minimum Stile Width</b>                            | • 6300 - 3-1/2" • 6400 - 2-1/8"   |
| <b>Door Thickness</b>                                 | • 1-3/4" - 2" (Consult factory for other)   |
| <b>Door Width</b>                                     | • 24", 36", 48" standard  |
| <b>Door Height</b>                                    | • Panic - Up to 10' • Fire - See fire ratings charts page 26  |
| <b>Strike</b>   | • Cast top strike, plate bottom strike  |
| <b>Finishes</b>                                       | • 605 - Polished Brass, 606 - Satin Brass, 613 - Dark Bronze, 622 - Flat Black, 626 - Satin Chrome, 630 - Satin Stainless Steel, 630F - Full Satin Stainless Surfaces<br>• Optional Anti-Microbial Coating available on 626, 630 & 630F   |
| <b>Fasteners</b>                                      | • Includes machine screws and wood screws • SNB Optional  |
| <b>Warranty</b>                                       | • Ten (10) year limited warranty  |
| <b>Electrified Options</b>                            | • Motorized Latch Retraction • Request to Exit/Signal Switch • Alarmed Exit<br>• Latch Bolt Monitor • ISMC Connectors   |
| <b>Certifications:<br/>Compliances:<br/>Listings:</b> | • Listed for UL 305 "Panic", listed for UL 10C "Fire Exit Hardware" up to 3 hours.<br>• ANSI/BHMA A156.3 Grade 1<br>• Complies with ADA (Americans with Disabilities Act) and ICC/ANSI 117.1 for Accessible and Usable Buildings<br>• FL #40297 +50/-50 psf 8080 18ga Pair<br>• Meets requirements of the BAA as a COTS product manufactured in the United States |

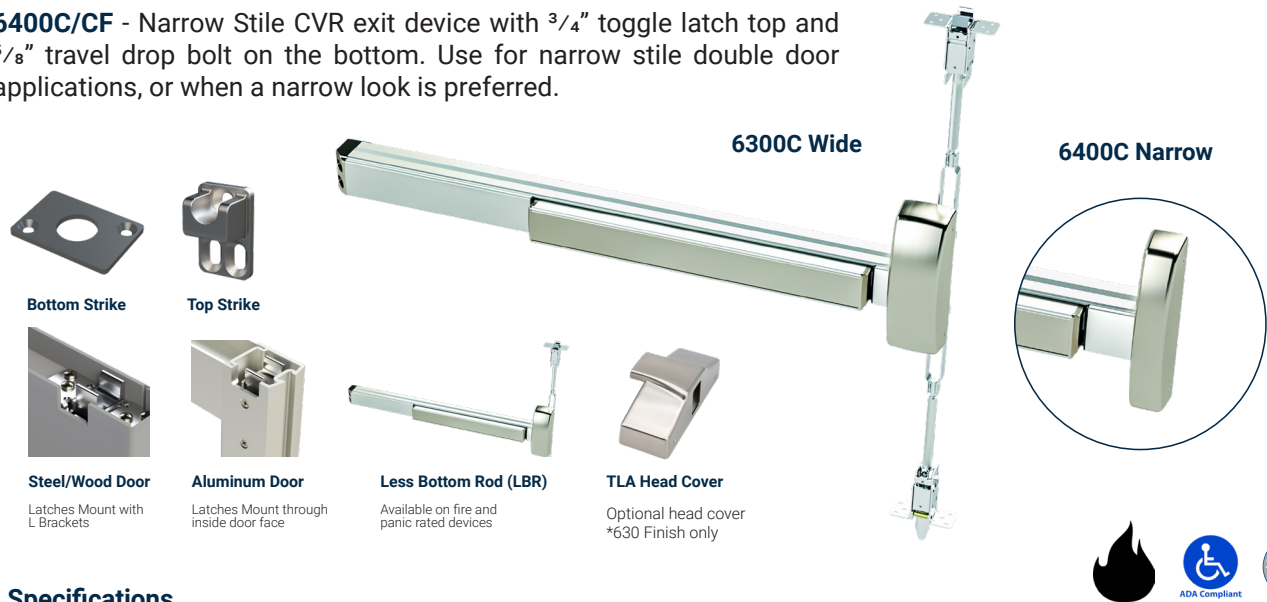
# Concealed Vertical Rod Device

## 6300C Wide Stile/6400C Narrow Stile

### Panic & Fire Rate

**6300C/CF** - Wide Stile CVR exit device with  $\frac{3}{4}$ " toggle latch top, and  $\frac{5}{8}$ " travel drop bolt on the bottom. Use for wide stile double door applications and for single door applications where more security is needed.

**6400C/CF** - Narrow Stile CVR exit device with  $\frac{3}{4}$ " toggle latch top and  $\frac{5}{8}$ " travel drop bolt on the bottom. Use for narrow stile double door applications, or when a narrow look is preferred.



### Specifications

|   |   |
|---|---|
| <b>Rail</b>   | <ul style="list-style-type: none"> <li>Extruded aluminum</li> <li>Specify 630F for full stainless surfaces (roll formed)</li> </ul>   |
| <b>Latch</b>  | <ul style="list-style-type: none"> <li>Top - Stainless Steel <math>\frac{3}{4}</math>" toggle</li> <li>Bottom - <math>\frac{5}{8}</math>" Travel Drop Bolt</li> <li>Less bottom rod option</li> </ul>   |
| <b>Hand</b>   | <ul style="list-style-type: none"> <li>Device is non-handed</li> <li>Trim is non-handed or field reversible</li> </ul>  |
| <b>Dogging</b>  | <ul style="list-style-type: none"> <li>Hex key dogging standard</li> <li>Cylinder dogging optional</li> <li>Dogging not available for fire labeled devices</li> </ul>   |
| <b>Minimum Stile Width</b>                            | <ul style="list-style-type: none"> <li>6300 - 3-1/2"</li> <li>6400 - 2-1/8"</li> </ul>  |
| <b>Door Thickness</b>                                 | <ul style="list-style-type: none"> <li>1-3/4" - 2" (Consult factory for other)</li> </ul>   |
| <b>Door Width</b>                                     | <ul style="list-style-type: none"> <li>24", 36", 48" standard</li> </ul>  |
| <b>Door Height</b>                                    | <ul style="list-style-type: none"> <li>Panic - Up to 10'</li> <li>Fire - See fire ratings charts page 26</li> </ul>   |
| <b>Strike</b>   | <ul style="list-style-type: none"> <li>Cast top strike, plated bottom strike</li> </ul>   |
| <b>Finishes</b>                                       | <ul style="list-style-type: none"> <li>605 - Polished Brass, 606 - Satin Brass, 613 - Dark Bronze, 622 - Flat Black, 626 - Satin Chrome, 630 - Satin Stainless Steel, 630F - Full Satin Stainless Surfaces</li> <li>Optional Anti-Microbial Coating available on 626, 630 &amp; 630F</li> </ul>   |
| <b>Fasteners</b>                                      | <ul style="list-style-type: none"> <li>Includes machine and wood screws</li> <li>SNB Optional</li> </ul>  |
| <b>Warranty</b>                                       | <ul style="list-style-type: none"> <li>Ten (10) year limited warranty</li> </ul>  |
| <b>Electrified Options</b>                            | <ul style="list-style-type: none"> <li>Motorized Latch Retraction</li> <li>Request to Exit/Signal Switch</li> <li>Alarmed Exit</li> <li>Latch Bolt Monitor</li> <li>ISMC Connectors</li> </ul>  |
| <b>Certifications:<br/>Compliances:<br/>Listings:</b> | <ul style="list-style-type: none"> <li>Listed for UL 305 "Panic", listed for UL 10C "Fire Exit Hardware" up to 3 hours.</li> <li>ANSI/BHMA A156.3 Grade 1 Pending</li> <li>Complies with ADA (Americans with Disabilities Act) and ICC/ANSI 117.1 for Accessible and Usable Buildings</li> <li>Meets requirements of the BAA as a COTS product manufactured in the United States</li> </ul> |

# Mortise Device

## 6300M Wide Stile

### Panic & Fire Rate

**6300M** - Wide Stile Mortise exit device with  $\frac{3}{4}$ " throw latch bolt. Use for wide stile single door applications. Also, use for retrofit or pair with SVR/CVR/flush bolts and open back strike.

- This device is built around our signature MR series mortise lock. Easily retrofit an existing mortise lock opening with a mortise device.



### Specifications

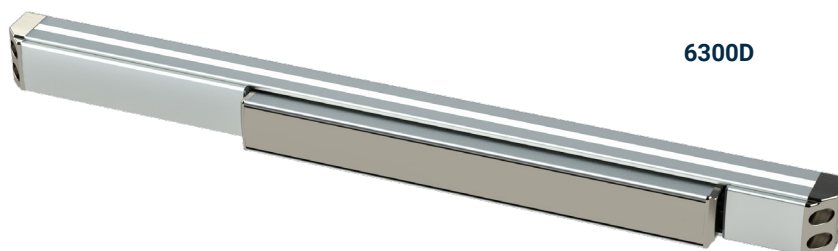
|   |  |
|---|--|
| <b>Rail</b>   | • Extruded aluminum • Specify 630F for full stainless surfaces (roll formed)   |
| <b>Latch</b>  | • Stainless steel dead locking with $\frac{3}{4}$ " throw  |
| <b>Hand</b>   | • Field reversible   |
| <b>Dogging</b>  | • Hex key dogging standard • Cylinder dogging optional • Dogging not available for fire labeled devices  |
| <b>Minimum Stile Width</b>                            | • 5"   |
| <b>Door Thickness</b>                                 | • 1- $\frac{3}{4}$ " - 2" (Consult factory for other)  |
| <b>Door Width</b>                                     | • 24", 36", 48" standard   |
| <b>Door Height</b>                                    | • Panic - Up to 10' • Fire - See fire ratings charts page 26   |
| <b>Strike Options</b>                                 | • Default ASA (4-7/8")   |
| <b>Finishes</b>                                       | • 605 - Polished Brass, 606 - Satin Brass, 613 - Oil Rubbed Bronze, 622 - Flat Black, 626 - Satin Chrome, 630 - Satin Stainless Steel, 630F - Full Satin Stainless Surfaces<br>• Optional Anti Microbial Coating available on 626, 630 & 630F  |
| <b>Fasteners</b>                                      | • Includes machine screws and wood screws • SNB Optional   |
| <b>Warranty</b>                                       | • Ten (10) year limited warranty   |
| <b>Electrified Options</b>                            | • Motorized Latch Retraction • Request to Exit/Signal Switch • Alarmed Exit<br>• Latch Bolt Monitor • ISMC Connectors  |
| <b>Certifications:<br/>Compliances:<br/>Listings:</b> | • Listed for UL 305 "Panic", listed for UL 10C "Fire Exit Hardware" up to 90 minutes.<br>• Complies with ADA (Americans with Disabilities Act) and ICC/ANSI 117.1 for Accessible and Usable Buildings<br>• Meets requirements of the BAA as a COTS product manufactured in the United States |



# Dummy Device

## 6300D Dummy

**6300D** - A dummy device with no latching. The device comes with an active push bar, but can also be dogged/locked down with the included dogging kit. Order with a signal switch to operate a mag lock or other electronic devices. The device is commonly used on inside vestibule doors where latching is not required, or as an electrical switch for an auxiliary device.



### Specifications

|   |   |
|---|---|
| <b>Rail</b>   | • Extruded aluminum   |
| <b>Hand</b>   | • Device is non-handed  |
| <b>Dogging</b>  | • Dogging standard    • Active push bar, dog to make inactive   |
| <b>Minimum Stile Width</b>                            | • 6300 - 3-1/2"   |
| <b>Door Thickness</b>                                 | • 1-3/4" - 2" (Consult factory for other)   |
| <b>Door Width</b>                                     | • 24", 36", 48" standard  |
| <b>Finishes</b>                                       | • 605 - Polished Brass, 606 - Satin Brass, 613 - Dark Bronze, 622 - Flat Black, 626 - Satin Chrome, 630 - Satin Stainless Steel, 630F - Full Satin Stainless Surfaces<br>• Optional Anti Microbial Coating available on 626, 630 & 630F |
| <b>Fasteners</b>                                      | • Includes machine and wood screws    • SNB Optional  |
| <b>Warranty</b>                                       | • Ten (10) year limited warranty  |
| <b>Electrified Options</b>                            | • Request to Exit/Signal Switch    • ISMC Connectors  |
| <b>Certifications:<br/>Compliances:<br/>Listings:</b> | • Complies with ADA (Americans with Disabilities Act) and ICC/ANSI 117.1 for Accessible and Usable Buildings<br>• Meets requirements of the BAA as a COTS product manufactured in the United States                                     |

## 6300C / 6400C Device Ordering Options Explained

The following options are available when ordering 6300/6400 devices.

### 630F

This finish option provides a device with main rail, push bar, and filler plates fully clad in brushed stainless steel.

### LBR

Less Bottom Rod is available on SVR and CVR devices. This option deletes the bottom latch on applications where the bottom latch would impede access, or where a floor strike is not desired. LBR option is available on both panic and fire rated devices.

### EC

End Cap Cover option provides a cover for the standard end cap. Can be used if the look is preferred, or to cover the end of the rail on devices that have been cut down.

### TLA

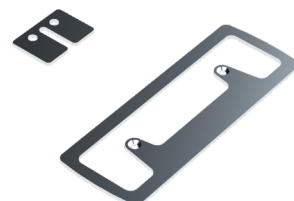
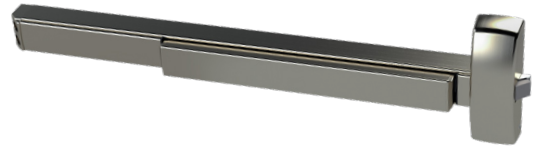
The TLA head cover can be ordered to make the 6300 device better match the previous generation 6200 devices. The head cover is available in 630 finish only.

### SNB

Order the SNB option if Sex Nuts are required. These are used on devices when trim is not used, and door construction is not sufficient to hold screws (such as wood or composite core).

### SK

The Shim Kit is used to space the device out from the door. Shims are 1/8" Thick. Use multiple shims for additional clearance.



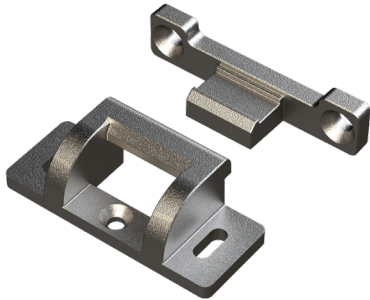
## Rim Strike Ordering Options

The following Rim Strike options are available when ordering 6300/6400 devices.

### BS – Blade Stop Strike (631041) – Rim Device

This strike is used on aluminum store front doors with a 1 / 2" blade stop. Strike comes with a protective plate to latch rubbing on frame and required mounting hardware.

*Strike is optional on both 6300 and 6400 devices.*



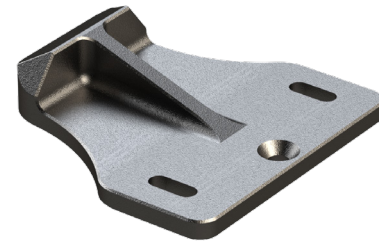
### ML – Mullion Fire Strike (639080) – Rim Device

This strike must be used for fire labeled rim devices when used with the 9300F mullion. It is also used for windstorm HVHZ labeled devices.

*(2) ML strikes are included with every fire rated mullion.*

### DD – Double Door Strike (631035) – Rim Device

This strike is used to mount a rim device on a pair of doors where one door is fixed by another means (e.g. Flush bolts, Surface bolts)



## Rim Device Stile Width Chart

| Order Option  | Strike # | Application              | 6300 Min Stile | 6400 Min Stile |
|---------------|----------|--------------------------|----------------|----------------|
| Default Panic | 639027   | Standard Panic Labeled   | 4-1/4"         | 3-1/8"         |
| Default Fire  | 639057   | Standard Fire Labeled    | 4-1/4"         | 3-1/8"         |
| Default Panic | 639027   | Panic Labeled Mullion    | 4-3/4"         | 3-5/8"         |
| ML            | 639080   | Fire Labeled Mullion     | 4-7/8"         | 3-3/4"         |
| WS            | 639080   | Windstorm                | 4-3/8"         | 3-1/4"         |
| DD            | 631035   | Double Door Strike       | 4-1/4"         | 3-1/8"         |
| BS            | 631041   | Panic Labeled Blade Stop | 3-1/2"         | 2-1/8"         |

# Introducing the 6300/6400 Trim Family

Trims are non-handed and use simple door prep based on a 2 hole bolt pattern with 7" centers, or a 4 hole bolt pattern with 7"x1-3/8" centers.

Narrow escutcheons work with both wide and narrow stile devices. Wide escutcheons work only with wide stile devices.



**6N Narrow Escutcheon** - A narrow profile escutcheon for 6300 or 6400 device. Available in 6 lever styles, and in 6 functions. Use with narrow stile devices or a wide stile device when a slimmer look is desired.



**6W Wide Escutcheon** - A wide escutcheon for the 6300 device. Available in 6 lever styles, and 5 functions - including electric locking. Use with wide stile devices, when a more substantial look is desired, or for retrofit where covering existing holes is important.

*\*Not compatible with 6400 narrow stile devices*



**6T Thumb Latch** - A grip pull with a thumb latch for 6300 or 6400 devices. Available in 3 functions.

*\*Not compatible with 6400C narrow stile devices.*



**6P Pull Plate** - Stainless Steel pull plate for 6300 device.

*\*Not compatible with 6400 narrow stile devices.*



**6G Grip Pull** - A grip pull for 6300 or 6400 devices. Made of stainless steel, this grip pull is available in 2 functions.



**6S Rose Trim** - Rose trim that fits into standard 161 prepped door with thru bolts. Works with 6300 rim, SVR and CVR devices. Available in 3 lever styles and in 4 functions.

*\*Not compatible with 6400 narrow stile devices*



**6C Cylinder only** - Order this trim option for cylinder only, Night Latch (F03) Function. Includes rim cylinder or \*IC rim housing, collar, and required mounting hardware.

*\*IC core sold separately*

## Lever Styles

**PHL**



**BSN**



**MIA**



**ORL**



**CHI**



**LAX**



# 6300/6400 Exit Device Trim

## How to Order

| TRIM TYPE  | LEVER                             | FINISH                       | CYLINDER TYPE   | KEYWAY                                | KEYING                                 |
|--|-----------------------------------|------------------------------|---|---------------------------------------|--|
| <b>6N08</b>  | <b>PHL</b>                        | <b>630</b>                   | <b>D</b>  | <b>SCC</b>                            | <b>KD</b>                              |
| <b>Narrow Escutcheon</b>                                   | <b>PHL</b> – Philadelphia         | <b>605</b> – Bright Brass    | <b>D</b> Default<br><b>L</b> Less Cylinder                            | <b>SCC</b> – Schlage C                | <b>KD</b> – Keyed Different            |
| <b>6N01/6NM01</b> – Narrow, Blank (No lever)               | <b>BSN</b> – Boston               | <b>606</b> – Satin Brass     | <b>SF6</b> Lock is SFIC prepped w/ 6 pin core                         | <b>OTHERS</b> – See Keyway Table Page | <b>KA</b> – Keyed Like                 |
| <b>6N02/6NM02</b> – Narrow, Fixed Lever                    | <b>MIA</b> – Miami                | <b>613</b> – Dark Bronze     | <b>SF7</b> Lock is SFIC prepped w/ 7 pin core                         |                                       | <b>KO</b> – Zero Bitted                |
| <b>6N03</b> – Narrow, Cylinder Only (No Lever) Night Latch | <b>*CHI</b> – Chicago             | <b>622</b> – Satin Black     | <b>SFL</b> Lock is SFIC prepped but less core                         |                                       | <b>MK</b> – Master Keyed               |
| <b>6N08/6NM08</b> – Narrow, Classroom                      | <b>*ORL</b> – Orlando             | <b>625</b> – Bright Chrome   | <b>SFC</b> Lock is SFIC prepped w/ construction core                  |                                       | <b>CMK</b> – Construction Master Keyed |
| <b>6N09/6NM09</b> – Narrow Storeroom                       | <b>*LAX</b> – Los Angeles         | <b>626</b> – Satin Chrome    | <b>SFP</b> Lock is SFIC prepped w/ plastic construction core          |                                       | <b>GMK</b> – Grand Master Keyed        |
| <b>6N14/6NM14</b> – Narrow Passage                         | <b>*Not available with S Trim</b> | <b>630</b> – Satin Stainless | <b>LF6</b> Lock is Schlage LFIC prepped w/ Schlage core               |                                       |  |
| <b>Wide Escutcheon</b>                                     |                                   |                              | <b>LFL</b> Lock is Schlage LFIC prepped but less core                 |                                       |  |
| <b>6W02/6WM02</b> – Wide, Fixed Lever                      |                                   |                              | <b>LFC</b> Lock is Schlage LFIC prepped w/ construction core          |                                       |  |
| <b>6W08/6WM08</b> – Wide, Classroom                        |                                   |                              | <b>*Cores sold separately - option specifies factory installation</b> |                                       |  |
| <b>6W09/6WM09</b> – Wide, Storeroom                        |                                   |                              |   |                                       |  |
| <b>6W14/6WM14</b> – Wide, Passage                          |                                   |                              |   |                                       |  |
| <b>6W99/6WM99</b> – Electrified                            |                                   |                              |   |                                       |  |
| <b>Sectional/Rose</b>                                      |                                   |                              |   |                                       |  |
| <b>6S02</b> – Sectional, Rigid Lever                       |                                   |                              |   |                                       |  |
| <b>6S08</b> – Sectional, Classroom                         |                                   |                              |   |                                       |  |
| <b>6S09</b> – Sectional, Storeroom                         |                                   |                              |   |                                       |  |
| <b>6S14</b> – Sectional, Passage                           |                                   |                              |   |                                       |  |
| <b>Thumb Latch</b>   |                                   |                              |   |                                       |  |
| <b>6T05</b> – Thumb Latch, Classroom                       |                                   |                              |   |                                       |  |
| <b>6T06</b> – Thumb Latch, Storeroom                       |                                   |                              |   |                                       |  |
| <b>6T15</b> – Thumb Latch, Passage                         |                                   |                              |   |                                       |  |
| <b>Pull Plate</b>  |                                   |                              |   |                                       |  |
| <b>6P03</b> – Pull Plate, Cylinder                         |                                   |                              |   |                                       |  |
| <b>Grip Pull</b>   |                                   |                              |   |                                       |  |
| <b>6G02/6GM02</b> – Pull only                              |                                   |                              |   |                                       |  |
| <b>6G03/6GM03</b> – Night Latch                            |                                   |                              |   |                                       |  |
| <b>Cylinder Only</b>                                       |                                   |                              |   |                                       |  |
| <b>6C03/6CM03</b> – Cylinder Only                          |                                   |                              |   |                                       |  |

| OPTIONS   |
|---|
| <b>TC</b> - Tactile Abrasive Coating (Lever trims only) |
| <b>AM</b> - Anti-Microbial                              |



**6N**  
Narrow Escutcheon  
01, 02, 03, 08, 09, 14



**6W**  
Wide Escutcheon  
02, 08, 09, 14, 99



**6G**  
Grip Pull  
02, 03



**6T**  
Thumb Latch  
05, 06, 15



**6P**  
Pull Plate  
02, 03



**6S**  
Sectional/Rose  
02, 08, 09, 14



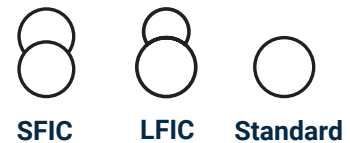
**6C**  
Cylinder Only  
03

## 6N Escutcheon Trim



### Features

- Works with 6300 or 6400 device
- Uses standard 1-1/8" mortise cylinder
- Standard, SFIC, and other cylinders available
- 6 Available lever styles
- Finishes: 605, 606, 613, 622, 625, 626, 630
- Escutcheon Size - 1 - 13/16" x 9"
- ADA Compliant



## 6N Functions

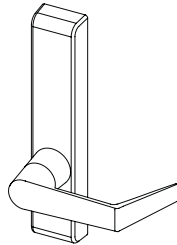
### 01 Blank

Blank Escutcheon



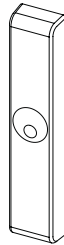
### 02 Pull Only

Entrance/Pull only when device is dogged. Fixed lever.



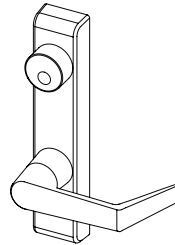
### 03 Night Latch

Entrance when latch retracted by key. Key removable only when locked.



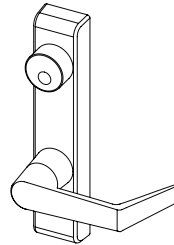
### 08 Classroom

Key locks or unlocks lever.



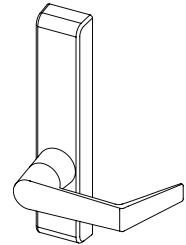
### 09 Storeroom

Entrance by lever when unlocked by key. Key removable only when locked.



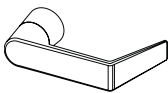
### 14 Passage

Entrance by lever, always unlocked.



## 6N Lever Styles

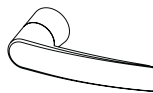
### PHL



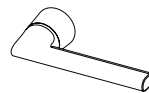
### BSN



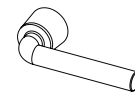
### MIA



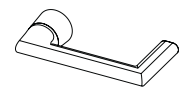
### ORL



### CHI



### LAX



## Applicable Devices

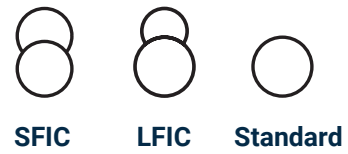
- 6400R Narrow Rim Device
- 6400V Narrow Surface Vertical Device
- 6400C Narrow Concealed Vertical Device
- 6300R Wide Stile Rim Device
- 6300V Wide Surface Vertical Device
- 6300C Wide Concealed Vertical Device
- 6300M Wide Mortise Device (Except 03 function)

## 6W Escutcheon Trim



### Features

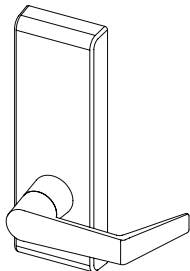
- Works only with 6300 wide device
- Uses standard 1-1/8" mortise cylinder
- Standard, SFIC, and other cylinders available
- 6 Available lever styles
- 08/09 Function conversion kit factory installed
- Finishes: 605, 606, 613, 622, 625, 626, 630
- Escutcheon Size - 3" x 9"
- ADA Compliant



## 6W Functions

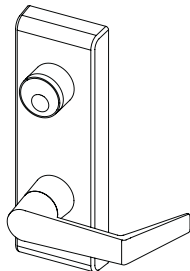
### 02 Pull Only

Entrance/Pull only when device is dogged. Fixed lever.



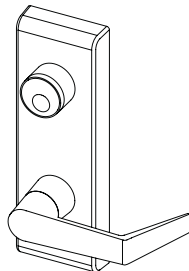
### 08 Classroom

Key locks or unlocks lever. Conversion kit included to convert locking function.



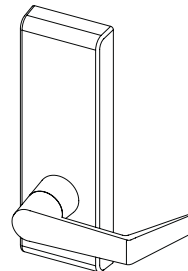
### 09 Storeroom

Entrance by lever when unlocked by key. Key removable only when locked.



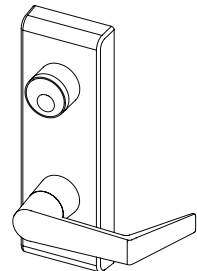
### 14 Passage

Entrance by lever, always unlocked.



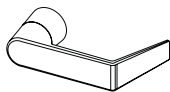
### 99 Electrified

Locked/Unlocked electronically. FS/FSF configurable. Entry by key. Key does not change lock state.



## 6W Lever Styles

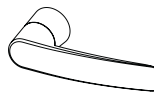
### PHL



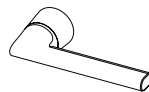
### BSN



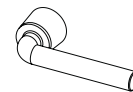
### MIA



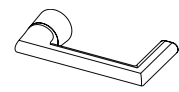
### ORL



### CHI



### LAX



## Applicable Devices

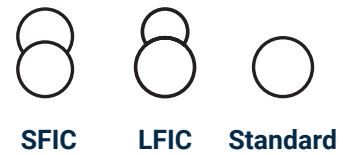
- 6300R Wide Stile Rim Device
- 6300V Wide Surface Vertical Device
- 6300C Wide Concealed Vertical Device
- 6300M Wide Mortise Device

# 6T Thumb Latch Escutcheon Trim



## Features

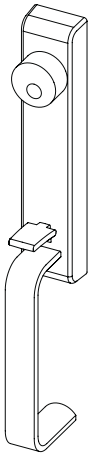
- Works with 6300 or 6400 device
- Uses standard 1-1/8" mortise cylinder
- Standard, SFIC, and other cylinders available
- Finishes: 613, 622, 630
- Escutcheon Size - 1 - 13/16" x 9"



## 6T Functions

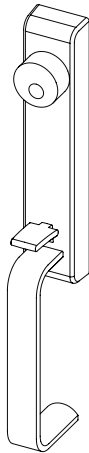
### 05 Classroom

Key locks or unlocks thumb piece.



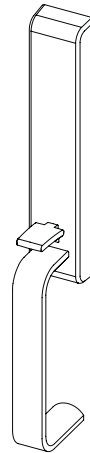
### 06 Storeroom

Entrance by thumb piece when released by key. Key removable only when locked.



### 15 Passage

Entrance by lever when unlocked by key. Key removable only when locked.



## Applicable Devices

- 6300R Wide Stile Rim Device
- 6300V Wide Surface Vertical Device
- 6300M Wide Mortise Device
- 6400R Narrow Rim Device
- 6400V Narrow Surface Vertical Device



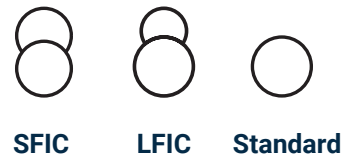
## 6P Pull Plate Trim



### Features

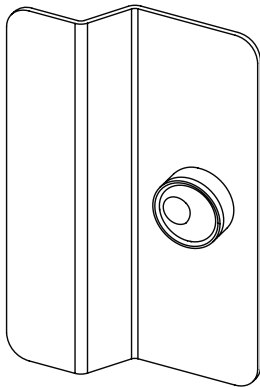
- Works with 6300 only
- Uses standard rim cylinder
- Standard, SFIC, and other cylinders available
- Finishes: 613, 622, 630
- Escutcheon Size - 1 - 13/16" x 9"

## 6P Functions



### 03 Night Latch

Entrance when latch retracted by key. Key removable only when locked.



## Applicable Devices

- 6300R Wide Stile Rim Device
- 6300V Wide Surface Vertical Device
- 6300C Wide Concealed Vertical Device

## 6G Grip Pull Trim



### Features

- Works with 6300 or 6400 device
- Uses standard rim cylinder
- Standard, SFIC, and other cylinders available
- Finish: 613, 622, 630
- Escutcheon Size - 2" x 13"



SFIC

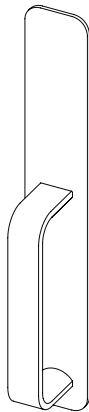
LFIC

Standard

## 6G Functions

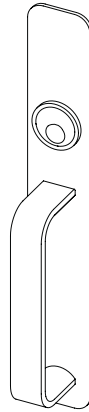
### 02 Pull Only

Entrance/Pull only when device is dogged.



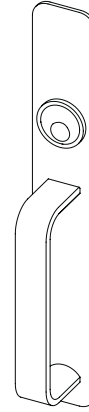
### 03 Night Latch

Entrance when latch retracted by key. Key removable only when locked.



### M03 Mortise Storeroom

Entrance when latch retracted by key. Key removable only when locked.



## Applicable Devices

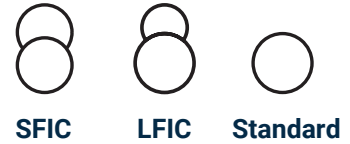
- 6300R Wide Stile Rim Device
- 6300V Wide Surface Vertical Device
- 6300C Wide Concealed Vertical Device
- 6300M Wide Mortise Device (02 Function only)
- 6400R Narrow Rim Device
- 6400V Narrow Surface Vertical Device
- 6400C Narrow Concealed Vertical Device

## 6S Rose Trim



### Features

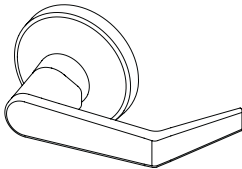
- Works only with 6300 device
- Uses standard KIK/IC cylinder
- Standard, SFIC, and other cylinders available
- 3 Available lever styles
- Finishes: 605, 606, 613, 622, 625, 626
- Rose Diameter - 3 - 3/8"
- ADA Compliant



## 6S Functions

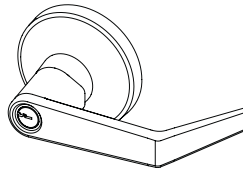
### 02 Pull Only

Entrance/Pull only when device is dogged. Lever is fixed.



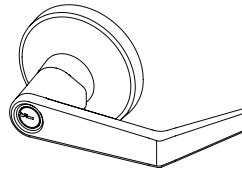
### 08 Classroom

Key locks or unlocks lever.



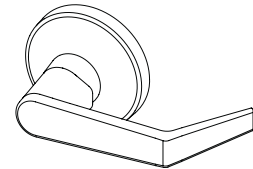
### 09 Storeroom

Entrance by lever when key inserted. Key removable only when locked.



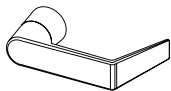
### 14 Passage

Entrance by lever. Always unlocked.



## 6S Lever Styles

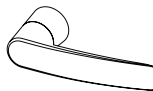
PHL



BSN



MIA



## Applicable Devices

- 6300R Wide Stile Rim Device
- 6300V Wide Surface Vertical Device
- 6300C Wide Concealed Vertical Device

# 6C Cylinder Only

## 6C Cylinder Only



**6C Cylinder Only** - Order this trim option for cylinder only, Night Latch (F03) Function. Includes rim cylinder or \*IC rim housing, collar, and required mounting hardware.

\*IC core sold separately

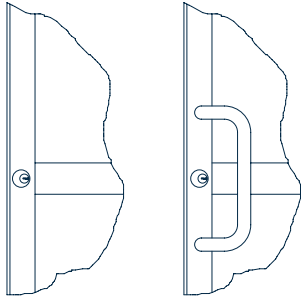
### How to Order

| Series                                       | Function  | Finish                     | Cylinder Type  | Keying                                |
|--|---|----------------------------|--|---------------------------------------|
| <b>6C</b>                                    | <b>03</b>   | <b>630</b>                 | <b>D</b>   | <b>SCC</b>                            |
| <b>6C</b> - Cylinder Only - 6300/6400 Device | <b>03</b> - Night Latch (Rim)<br><b>M03</b> - Night Latch (Mortise) | <b>605</b> - Bright Brass  | <b>D</b> Default                                       | <b>SCC</b> - Schlage C                |
|  |   | <b>606</b> - Satin Brass   | <b>L</b> Less Cylinder                                 | <b>Others</b> - See Keyway Table Page |
|  |   | <b>613</b> - Dark Bronze   | <b>SF6</b> - SFIC prepped w/ 6 pin core                |                                       |
|  |   | <b>622</b> - Satin Black   | <b>SF7</b> - SFIC prepped w/ 7 pin core                |                                       |
|  |   | <b>625</b> - Bright Chrome | <b>SFL</b> - SFIC prepped but less core                |                                       |
|  |   | <b>626</b> - Satin Chrome  | <b>SFC</b> - SFIC prepped w/ construction core         |                                       |
|  |   |                            | <b>SFP</b> - SFIC prepped w/ plastic construction core |                                       |
|  |   |                            | <b>LF6</b> - Schlage LFIC prepped w/ Schlage core      |                                       |
|  |   |                            | <b>LFL</b> - Schlage LFIC prepped but less core        |                                       |
|  |   |                            | <b>LFC</b> - Schlage LFIC prepped w/ construction core |                                       |

# 6300/6400 Trim Compatibility

## Narrow/Medium Stile Aluminum Door Applications

### 6400 Narrow Devices - 2-1/8" Stile Door

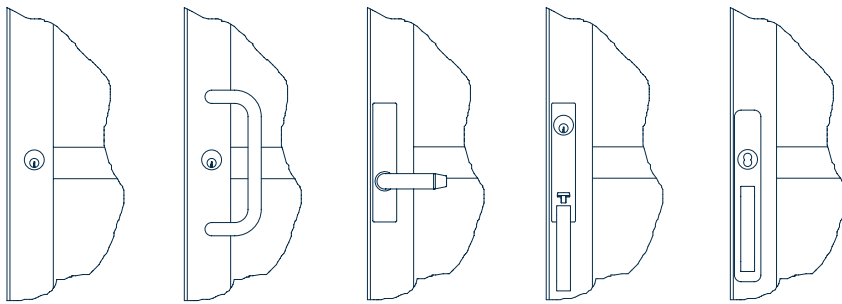


64C Cylinder Only  
Functions: 03

6C4 Cylinder with 9E Pull  
Functions: 03

Note: Pull for 6400 CVR Device must be 10" CTC

### 6400 Narrow Devices - 3-1/2" Stile Door



64C Cylinder Only  
Functions: 03

6C4 Cylinder with 9E Pull  
Functions: 03

6N Escutcheon  
Functions: 01, 02, 03, 08, 09, 14

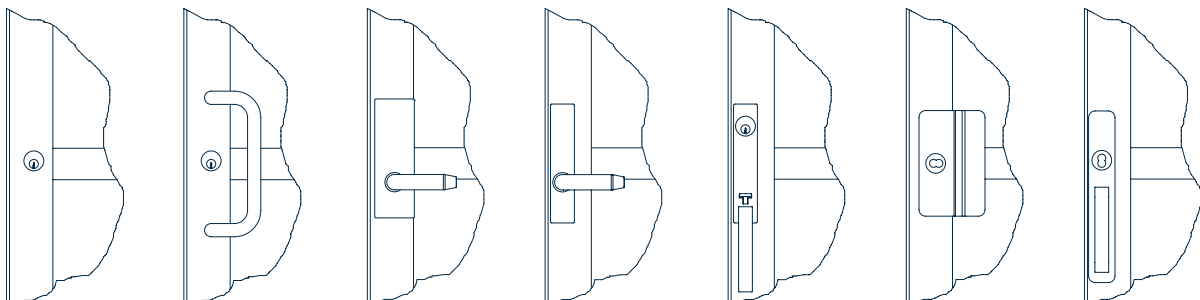
6T Escutcheon  
Functions: 05, 06, 15

6G Pull  
Functions: 02, 03

Note: Pull for 6400 CVR Device must be offset from device Centerline if other than 10" CTC

Note: This trim does not work on 6400 CVR Device - lower thru bolt interferes

### 6300 Wide Devices - 3-1/2" Stile Door



64C Cylinder Only  
Functions: 03

6C4 Cylinder with 9E Pull  
Functions: 03

6W Escutcheon  
Functions: 02, 08, 14, 99

6N Escutcheon  
Functions: 01, 02, 03, 08, 09, 14

6T Escutcheon  
Functions: 05, 06, 15

6P Pull  
Functions: 02, 03

6G Pull  
Functions: 02, 03

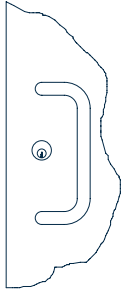
# 6300/6400 Trim Compatibility

## Steel/Wood Door Applications

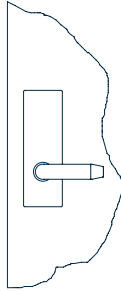
### 6300 Wide Devices - Steel/Wood Door



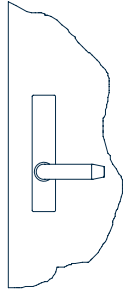
64C Cylinder Only  
Functions: 03



6C4 Cylinder with 9E Pull  
Functions: 03



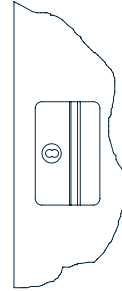
6W Escutcheon  
Functions: 02, 08,  
14, 99



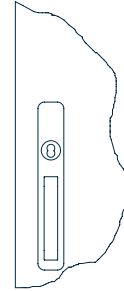
6N Escutcheon  
Functions: 01, 02,  
03, 08, 09, 14



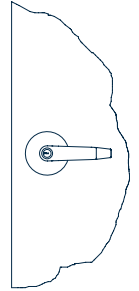
6T Escutcheon  
Functions: 05, 06, 15



6P Pull  
Functions: 02, 03

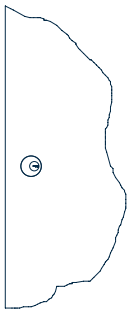


6G Pull  
Functions: 02, 03

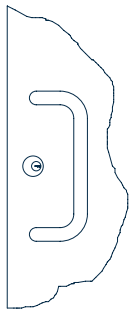


6S Rose  
Functions: 02, 08,  
09, 14

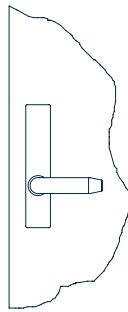
### 6400 Narrow Devices - Steel/Wood Door



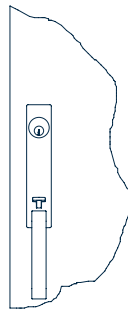
64C Cylinder Only  
Functions: 03



6C4 Cylinder with 9E Pull  
Functions: 03



6N Escutcheon  
Functions: 01, 02,  
03, 08, 09, 14



6T Escutcheon  
Functions: 05, 06, 15



6G Pull  
Functions: 02, 03

Note: This trim does not  
work on 6400 CVR Device  
- lower thru bolt interferes

# Electrified Options

| Option     | Description                               | MLR | AL | SS | LM | ISM |
|------------|---|-----|----|----|----|-----|
| <b>MLR</b> | Motorized Latch Retraction                |     |    | 0  | 0  | 0   |
| <b>AL</b>  | Alarmed Exit                              |     |    |    | 0* | 0   |
| <b>SS</b>  | Signal Switch on touch bar                | 0   |    |    | 0  | 0   |
| <b>LM</b>  | Latch bolt Monitoring                     | 0   | 0  | 0  |    | 0   |
| <b>ISM</b> | Industry Standard Connector (Molex® Type) | 0   | 0  | 0  | 0  |     |

Not compatible  
 Cannot be combined

0= option  
 0\*= Standard on SVR/CVR

## MLR - Motorized Latch Retraction

### Operation

When power is applied the MLR retracts the latch(es) allowing the door to be opened. Duration of latch retraction is controlled by the access control system. Power can be continuously applied to electronically dog the exit device.

### Features

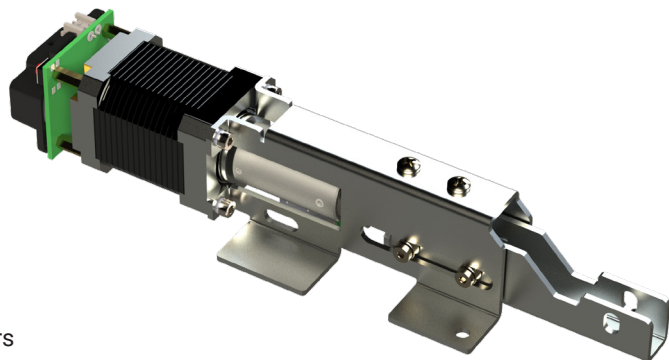
- Works with 6300 wide stile or 6400 narrow stile devices; panic or fire labeled
- Innovative motor drive retracts push pad
- Allows free egress at all times
- Suitable for pairing with Low Energy Power Operators

### Electrical Specifications

- Input voltage 24 VDC  $\pm$  10%
- Non-polarized power leads
- Latch Retraction Speed:  $\sim$ 300mS
- Average in-rush current: 900mA
- Average holding current: 200mA

### Retrofit kit part number: 639065

- Designed to field retrofit 6300 or 6400 series devices
- Includes motor drive module, connectors and fasteners



## Electrified Options

**AL - Alarm Kit**

**ALHW - Alarm Kit**

(Hardwire power & relay output)

### Operation

Battery powered self-contained alarm kit for 6300 or 6400 exit device.

The alarm kit is armed via clockwise rotation of the key. If armed, a siren sounds, and the red LED rapidly flashes when the touch bar is depressed. Factory default is continuous alarm. Rotate key counterclockwise to silence siren and disarm the unit.

Alarm kit for panic devices include a third position for dogging the device.

**Alarm Mode:** Unit can be configured to auto silence the alarm after 7, 3 or 1 minute.

**Armed State:** Red LED blinks every 10-seconds to indicate unit is armed.

**Low Battery:** Siren will intermittently chirp when battery is low (<7VDC). Siren chirps regardless of arming state.

**Battery Life:** 1-year life expectancy in armed, unactuated state.

**Siren Intensity:** 95dB @ 4in

**Operating Temperature:** 0 C – 49 C

**Max Relative Humidity:** 85% (non-condensing)

**Included Decal:** "EMERGENCY EXIT ONLY – ALARM WILL SOUND"

**Latchbolt Monitor:** Standard for SVR device

**Optional Rim Latchbolt Monitor:** Adds latchbolt monitor. When armed, either the touch bar or latchbolt monitor actuate siren.

**Optional Relay Output:** Adds a Single Pole Double Throw (SPDT) relay and hardwire power input to the unit. When armed, relay state changes when the touch bar is depressed. Can be used with access control systems. Dry contact SPDT rated 125VAC/ 60VDC with 9VDC coil



### Bar Length:

36" Device – 2" max cut

48" Device – 8" max cut

### Electrical Specifications:

**Power Requirements:** One 9-VDC Alkaline Battery (included).

*Optional (with relay output):* 12-24VDC/VAC ±10% hardwired power. Battery can be used as emergency backup. It is protected from hardwired power.

### Power Consumption:

Typical: 18µA

During alarming: 18mA

How to order: Specify AL for alarm kit or ALHW alarm kit with optional hardwire and relay output.

### Panic rated device -

Position 1: On/Armed

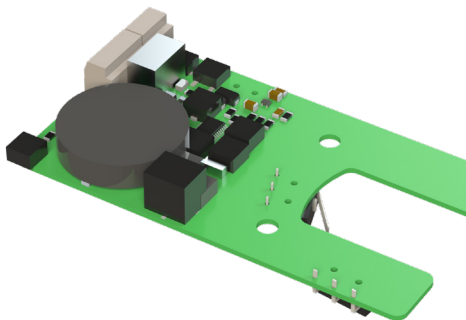
Position 2: Off

Position 3: Off & Dogged

### Fire Rated Device -

Position 1: On/Armed

Position 2: Off





## Electrified Options

### 6W 99 - Electrified Locking/Unlocking Trim

For ordering information see trim section



#### Operation

Field selectable operation - Fail Safe (Unlocked when power removed) or Fail Secure (Locked when power removed). Key allows entry but does not change state of lock.

#### Features

- Motorized locking/unlocking
- Field changeable from Fail Secure (Default) to Fail Safe
- AC or DC input voltage.
- Works with rim, surface vertical rod and concealed vertical rod devices.
- Two (2) year warranty
- Designed and assembled in the USA, Lancaster, PA.

#### Electrical Specifications

- Non-polarized power leads
- Power requirements: 12-24VDC/VAC  $\pm$  10%
- Average in-rush current: 12-24VDC/VAC: 1A for 1 second
- Average holding current: 12-24VDC: 5mA after 30 seconds  
12-24VAC: 15mA after 30 seconds
- Power must be applied for a minimum of 5 seconds

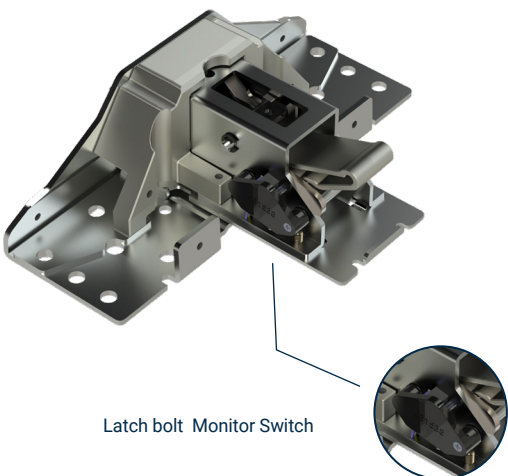
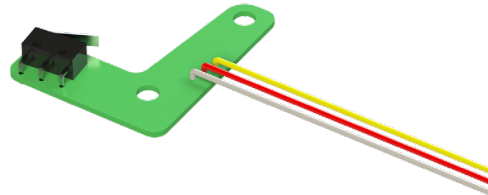
### SS - Signal Switch/REX - Request to exit

#### Operation:

Monitors push bar operation. NO or NC operation.

#### Electrical Specifications:

Single Pull Double Throw (SPDT): 125VAC – 3A  
30VDC – 3A



Latch bolt Monitor Switch

### LM - Latch bolt Monitor Switch

#### Operation:

Monitors latch status. Available on Rim, SVR, CVR and Mortise. NO or NC operation.

#### Electrical Specifications:

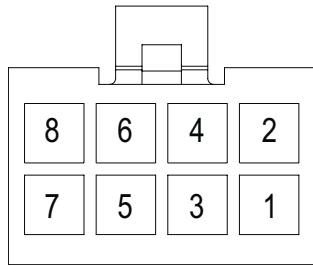
Single Pull Double Throw (SPDT): 125VAC – 3A  
30VDC – 3A

# Electrified Options

## ISMC - Industry Standard Molex Connector

**Operation:**

Molex type connectors for simpler wiring



Terminal insertion end shown for ISMC connector (PDQ P/N 88850)

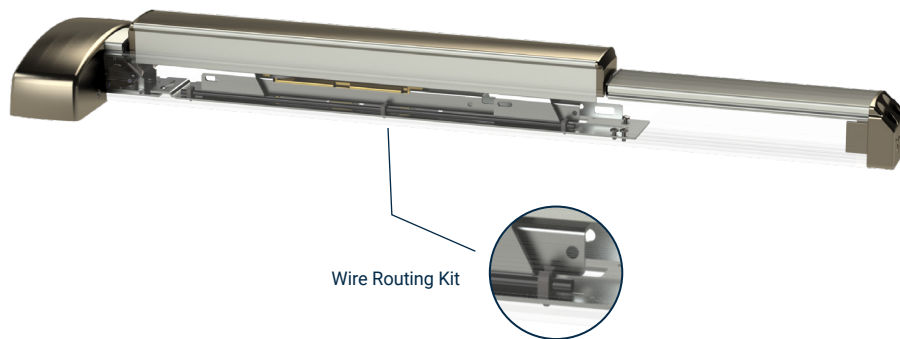
| Function | Wire Color | Optional ISMC Pin# |
|----------|------------|--------------------|
| Power*   | White/Blue | 1                  |
| Power*   | White/Blue | 2                  |
| REX(COM) | Yellow     | 3                  |
| REX(N/O) | Red        | 4                  |
| REX(N/C) | Gray       | 5                  |
| LM(COM)  | Black      | 6                  |
| LM(N/O)  | Brown      | 7                  |
| LM(N/C)  | Blue       | 8                  |

\*Power wires are non-polar

## Wire Routing Kit

Included with Latch bolt Monitor Switch, 6W99 Trim, and available as a kit.

**Description:** Safely route wires through device where they will not be pinched.



Wire Routing Kit

# Cylinders and Keying


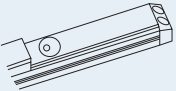
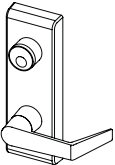
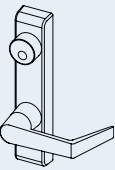

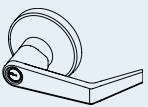


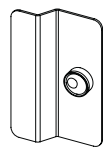
## Keyways

| Conventional Cylinder |                       | Small Format Interchangeable Core  |   | Large Format Interchangeable Core |                       |
|-----------------------|-----------------------|--|---|-----------------------------------|-----------------------|
| Keyway                | PDQ Keyway Designator | Keyway (BEST Compatible)   | PDQ Keyway Designator   | Keyway (Schlage Compatible)       | PDQ Keyway Designator |
| Schlage C (Default)   | SCC                   | BEST A (Default), B, C, D, E, F, G, H, J, K, L, M, Q, R, WA, WB, WG, WH, TB, TD, TE, R | A (Default), B, C, D, E, F, G, H, J, K, L, M, Q, R, WA, WB, WG, WH, TB, TD, TE, R | Schlage C (Default)               | SCC (Default)         |
| PDQ Restricted        | TA                    |  |   |                                   |                       |
| Arrow AR1             | ARA                   |  |   |                                   |                       |
| Corbin 59A1           | CO59A1                |  |   |                                   |                       |
| Corbin 60             | CO6                   |  |   |                                   |                       |
| Corbin L4             | CL4                   |  |   |                                   |                       |
| Russwin D1            | RUD                   |  |   | PDQ Exclusive                     | PDQ1                  |
| Russwin 981           | RUD981                |  |   |                                   | PDQ2                  |
| Schlage E             | SCE                   |  |   | PDQ Exclusive and Restricted      | PDQ3                  |
| Schlage C             | SCC                   |  |   |                                   |                       |
| Schlage C-K           | SCC-K                 |  |   |                                   |                       |
| Sargent LA            | SAL                   |  |   |                                   |                       |
| Sargent RA-RC         | RA-RC                 |  |   |                                   |                       |
| Yale E1R              | YA8                   |  |   |                                   |                       |
| Yale GA               | GA                    |  |   |                                   |                       |
| Falcon E-R            | FAL                   |  |   |                                   |                       |
| Kwikset               | KW                    |  |   |                                   |                       |

## Keying

| Description               | PDQ Keying Designator |
|---------------------------|-----------------------|
| Keyed Different (Default) | KD                    |
| Keyed Alike               | KA                    |
| "O" Zero Bitted           | KO                    |
| Master Keyed              | MK                    |
| Construction Master Keyed | CMK                   |
| Grand Master Keyed        | GMK                   |

# Cylinder Application Chart

| TRIM TYPE                         | FUNCTION                  | IMAGE   | STANDARD CYLINDER  | BEST SFIC  | SCHLAGE STYLE LFIC  |
|-----------------------------------|---------------------------|---|--|--|---|
| <b>CYLINDER ONLY</b>              | 03<br>(Less Outside Trim) |    | Rim cylinder (use rim cylinder included collar, mounting plate & screws)         | SFIC Rim Housing (use rim housing included collar, mounting plate & screws)                                | LFIC Rim Housing (use rim housing included collar, mounting plate & screws)                   |
| <b>CYLINDER DOGGING/ALARM KIT</b> | All Devices               |    | 1-1/8" Mortise Cylinder<br>631093 Trim Ring<br>Yale Cam                          | SFIC 7 pin housing<br>(2) 631093 Trim Rings<br>Yale Cam  | LFIC housing<br>631094 Collar (5/8")<br>Yale Cam  |
| <b>6W</b>                         | All Keyed Functions       |    | 1-1/8" Mortise Cylinder<br>631094 Collar (5/8")<br><br>Corbin A06<br>or Yale Cam | SFIC 7 pin housing<br>631094 Collar Flipped<br>(3/4")<br>631093 Trim Ring<br><br>Corbin A06<br>or Yale Cam | LFIC housing<br>631094 Collar Flipped (3/4")<br>631093 Trim Ring<br>Corbin A06<br>or Yale Cam |
| <b>6N</b>                         | 08, 09                    |    | 1-1/8" Mortise Cylinder<br>631094 Collar (5/8")<br><br>Corbin A06<br>or Yale Cam | SFIC 7 pin housing<br>631094 Collar Flipped<br>(3/4")<br>631093 Trim Ring<br><br>Corbin A06<br>or Yale Cam | LFIC housing<br>631094 Collar Flipped (3/4")<br>631093 Trim Ring<br>Corbin A06<br>or Yale Cam |
| <b>6N</b>                         | 03                        |   | Rim Cylinder   | SFIC rim housing   | LFIC rim housing  |
| <b>6S</b>                         | All Keyed Functions       |  | Must order product with KIK / Standard cylinder lever                            | Must order product with SFIC lever   | Must order product with Schlage style LFIC Lever  |
| <b>6T</b>                         | All Keyed Functions       |  | 1-1/8" Mortise Cylinder<br>631094 Collar (5/8")<br><br>Corbin A06<br>or Yale Cam | SFIC 7 pin housing<br>631094 Collar Flipped<br>(3/4")<br>631093 Trim Ring<br>Corbin A06<br>or Yale Cam     | LFIC housing<br>631094 Collar Flipped (3/4")<br>631093 Trim Ring<br>Corbin A06<br>or Yale Cam |
| <b>6G</b>                         | All Keyed Functions       |  | Rim Cylinder<br>Standard rim cylinder trim ring                                  | SFIC rim housing<br>Standard rim cylinder trim ring  | LFIC rim housing<br>Standard rim cylinder trim ring   |
| <b>6P</b>                         | All Keyed Functions       |  | Rim Cylinder<br>Standard rim cylinder trim ring                                  | SFIC rim housing<br>Standard rim cylinder trim ring  | LFIC rim housing<br>Standard rim cylinder trim ring   |

# Mullion

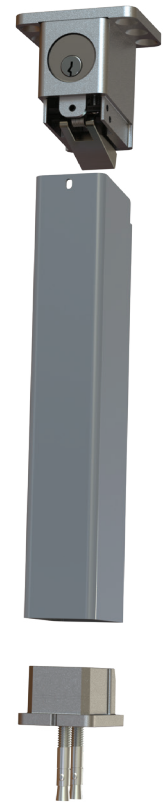
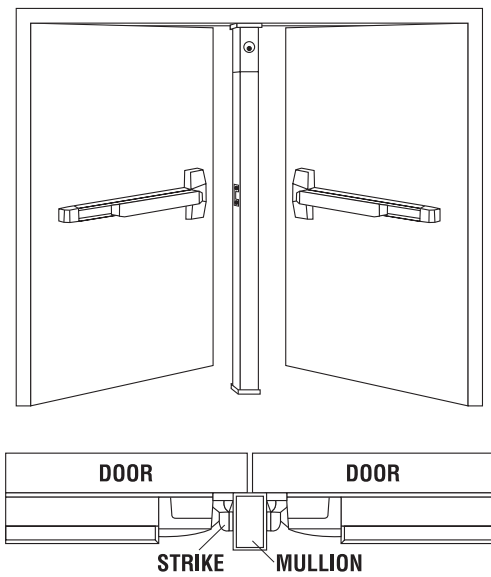
## 9300 Mullion

The PDQ 9300 Series removable mullions are designed for use with the 6300/6400 Series Rim Exit Devices on pairs of doors. They are designed for quick removal from the top bracket by simple operation of the rim cylinder when a clear, unobstructed large opening is required. Once the mullion is removed, carts, gurneys, large machinery and the like can freely pass through the opening. When the mullion is re-installed, the unit will self lock in place without a key.

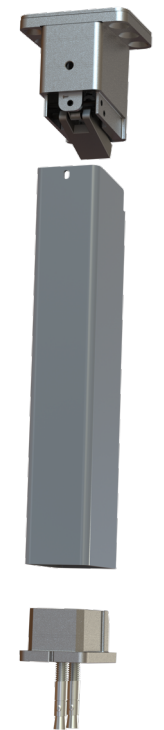
## Specifications

|   |  |
|---|--|
| <b>Mullion Head/Foot brackets:</b>                    | • Cast Stainless Steel   |
| <b>Tube Dimensions:</b>                               | • Powder Coated 2" x 3" Steel - 3/16" Wall   |
| <b>Strike:</b>  | • 639080 Strike included for Fire Labeled • Strike not included for panic mullion. Use supplied strike with exit device.   |
| <b>Size:</b>  | • 8' or 10' lengths - Can easily be cut to shorter size in field   |
| <b>Finish:</b>  | • Powder Coated 689 (Aluminum) - can be painted  |
| <b>Electrified Options:</b>                           | • Wire routing w/ plugs  |
| <b>Warranty:</b>                                      | • One (1) year limited warranty  |
| <b>Certifications:<br/>Compliances:<br/>Listings:</b> | • Fire model is 3 hour fire labeled for pairs up to and including 8' x 8' (With 6300RF/6400RF Rim Device)<br>• Meets requirements of the BAA as a COTS product manufactured in the United States |

## Orientation



**Key Removable**



**Non-Keyed Removable**

# 9300 Mullion

## How to order

| DEVICE TYPE  | FOR DOOR HEIGHT                                 | REMOVABLE TYPE                               | RATING  | OPTIONS                  | KEYING    |
|--------------|---|--|---|--------------------------|-----------|
| 93           | 0   | 0  | —   | —                        |           |
| 93 - Mullion | 0 - 8' and under Door<br>1 - 10' and under Door | 0 - Key Removable<br>1 - Non-Keyed Removable | Blank - Non Fire Rated<br>F - Fire Rated (8' Max) | EM - Electrified Mullion | See Below |

## Key Removable Only

| CYLINDER TYPE   | KEYWAY  | KEYING   |
|---|---|--|
| D   | SCC   | KD   |
| <b>D</b> Default<br><b>L</b> Less Cylinder<br><b>SF6</b> Lock is SFIC prepped w/ 6 pin core<br><b>SF7</b> Lock is SFIC prepped w/ 7 pin core<br><b>SFL</b> Lock is SFIC prepped but less core<br><b>SFC</b> Lock is SFIC prepped w/ construction core<br><b>SFP</b> Lock is SFIC prepped w/ plastic construction core<br><b>LF6</b> Lock is Schlage LFIC prepped w/ Schlage core<br><b>LFL</b> Lock is Schlage LFIC prepped but less core<br><b>LFC</b> Lock is Schlage LFIC prepped w/ construction core | <b>SCC</b> – Schlage C<br><b>OTHERS AVAILABLE</b> | <b>KD</b> – Keyed Different<br><b>KA</b> – Keyed Like<br><b>KO</b> - Zero Bitted<br><b>MK</b> – Master Keyed<br><b>CMK</b> – Construction Keyed<br><b>GMK</b> – Grand Master Keyed |

## 639081 - Mullion Storage Kit

Kit includes items necessary to mount/store mullion on the wall when not in use

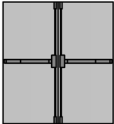


## Fire Ratings

### 6300RF / 6400RF Rim Devices

|   |                          | RATING       | MAX OPENING   | APPLICATION                                |
|---|--------------------------|--------------|---------------|--|
|  | Single Door              | 3 Hour Rated | 4' x 10' Door |  |
|  | Double Door with Mullion | 3 Hour Rated | 8' x 8' Pair  | Single Egress Pairs (Swing Same Direction) |

### 6300VF / 6400VF Surface Vertical Devices

|  |  | RATING       | MAX OPENING   | APPLICATION                                     |
|--|--|--------------|---|---|
|   | Double Door Top/Btm Latches or Less Bottom Rod (LBR) | 3 Hour Rated | 8' x 10' Top/Btm Latches<br>8' x 8' Less Bottom Rod | Single Egress Pairs (Swing Same Direction)      |
|  | Double Door Top/Btm Latches or Less Bottom Rod (LBR) | 3 Hour Rated | 8' x 10' Top/Btm Latches<br>8' x 8' Less Bottom Rod | Double Egress Pairs (Swing Opposite Directions) |

### 6300CF / 6400CF Concealed Vertical Devices

|   |  | RATING       | MAX OPENING  | APPLICATION                                     |
|---|--|--------------|--------------|---|
|  | Double Door Top/Btm Latches or Less Bottom Rod (LBR) | 3 Hour Rated | 8' x 8' Pair | Single Egress Pairs (Swing Same Direction)      |
|  | Double Door Top/Btm Latches or Less Bottom Rod (LBR) | 3 Hour Rated | 8' x 8' Pair | Double Egress Pairs (Swing Opposite Directions) |

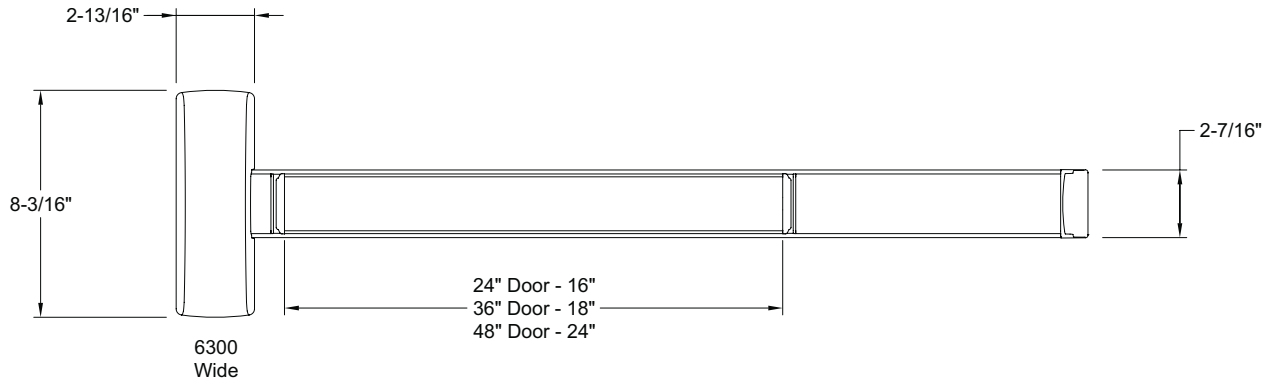
### 6300MF Mortise Devices

|   |             | RATING          | MAX OPENING  | APPLICATION |
|---|-------------|-----------------|--------------|-------------|
|  | Single Door | 90 Minute Rated | 4' x 8' Door |             |

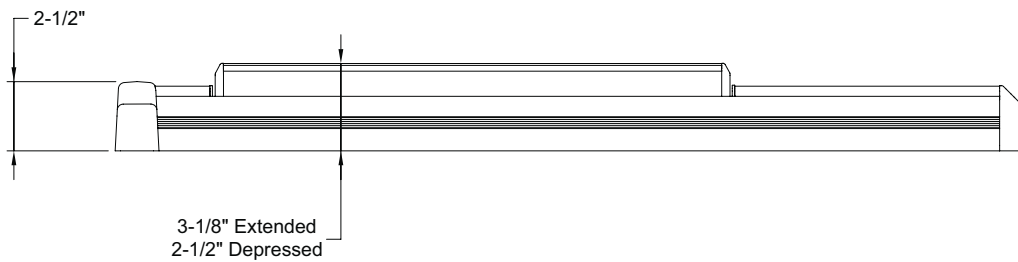
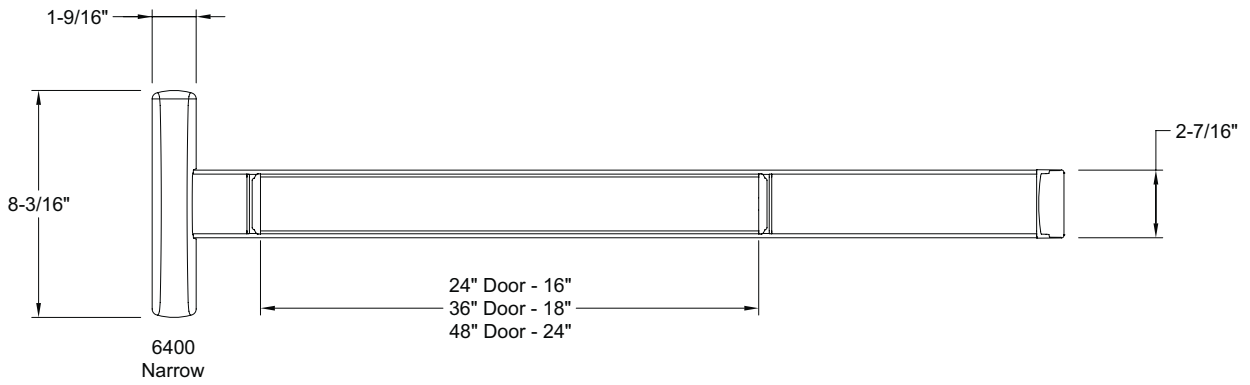
# 6300/6400

## Device Dimensions

### 6300 Series Wide Stile

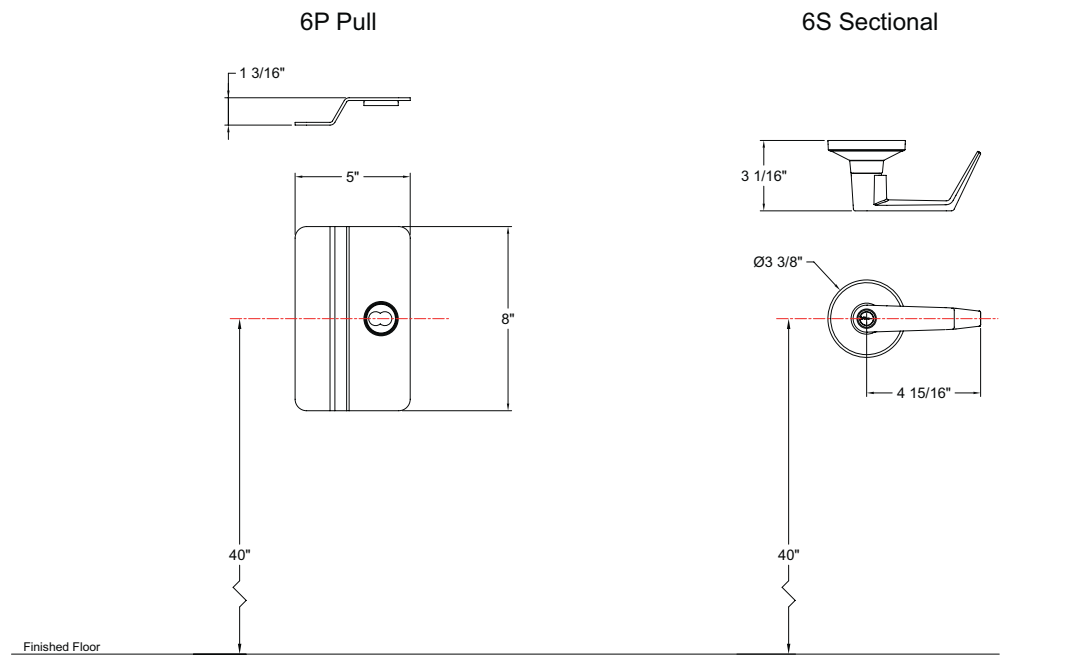
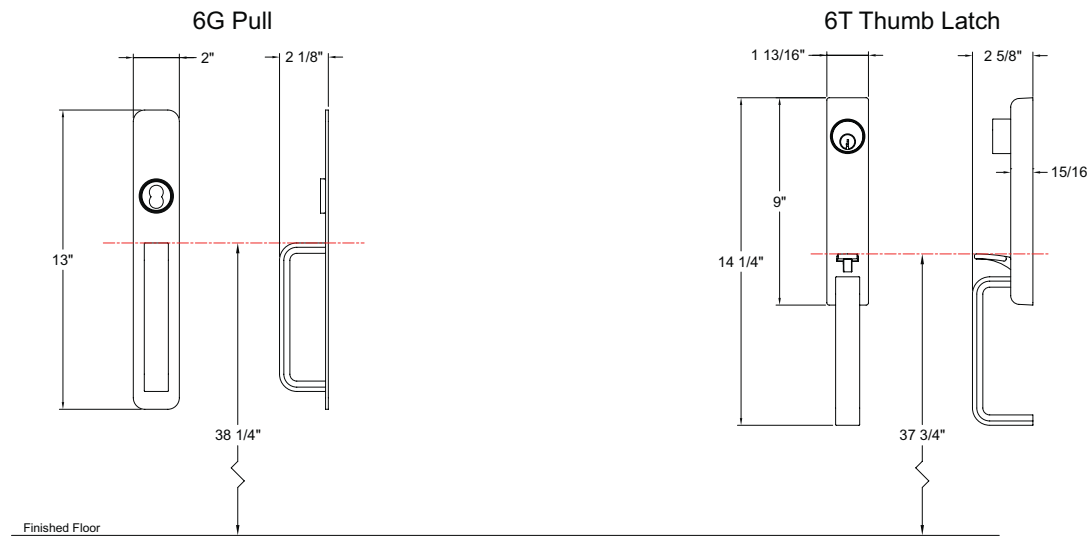
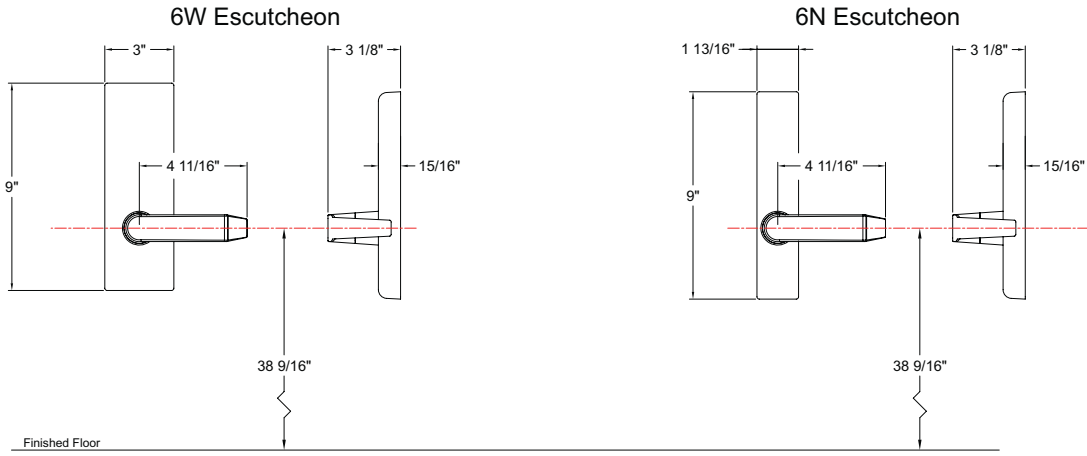


### 6400 Series Narrow Stile





**Trim Dimensions**



## Door Width Chart/Cross Reference

### 6300/6400 Series Door Width Chart

| PART     | DESCRIPTION               | FOR DOOR | MAX CUT <sup>1,2</sup> |
|----------|---------------------------|----------|------------------------|
| 6300R-CD | 6300 Rim Cylinder dogging | 36"      | 6"                     |
| 6300R    | 6300 Rim Hex Key dogging  | 36"      | 6"                     |
| 6300RF   | 6300 Rim Fire             | 36"      | 8"                     |
| 6301V    | 6300 SVR Cylinder dogging | 36"      | 6"                     |
| 6300V    | 6300 SVR Hex Key dogging  | 36"      | 6"                     |
| 6300VF   | 6300 SVR Fire             | 36"      | 8"                     |
| 6300C    | 6300 CVR Hex Key dogging  | 36"      | 6"                     |
| 6300CF   | 6300 CVR Fire             | 36"      | 8"                     |
| 6311R    | 6300 Rim Cylinder dogging | 48"      | 12"                    |
| 6310R    | 6300 Rim Hex Key dogging  | 48"      | 12"                    |
| 6310RF   | 6300 Rim Fire             | 48"      | 14"                    |
| 6311V    | 6300 SVR Cylinder dogging | 48"      | 12"                    |
| 6310V    | 6300 SVR Hex Key dogging  | 48"      | 12"                    |
| 6310VF   | 6300 SVR Fire             | 48"      | 14"                    |

24" DEVICE

No cut

No electric options

1: For the MLR Motorized Latch Retraction option: 3 ft devices, maximum cut is 3". 4 ft devices, maximum cut is 9".

2: For the Alarm option: 3 ft devices, maximum cut is 2". 4 ft devices, maximum cut is 8".

### 6300 Wide Stile Cross Reference

| MANUFACTURER | EXIT DEVICE SERIES/TYPE |             |              |                   |                        |                             |          |              |
|--------------|-------------------------|-------------|--------------|-------------------|------------------------|-----------------------------|----------|--------------|
|              | RIM                     | RIM FIRE    | VERTICAL ROD | VERTICAL ROD FIRE | CONCEALED VERTICAL ROD | CONCEALED VERTICAL ROD FIRE | MORTISE  | MORTISE FIRE |
| PDQ          | 6300R                   | 6300RF      | 6300V        | 6300VF            | 6300C                  | 6300CF                      | 6300M    | 6300MF       |
| CORBIN       | ED5200                  | ED5200A     | ED5400       | ED5400A           | ED5860                 | ED5860B                     | ED5600   | ED5600A      |
| DORMA        | 9300                    | F9300       | 9400         | F9400             | 9100                   | F9100                       | 9500     | F9500        |
| FALCON       | 25-R                    | F-25-R      | 25-V         | F-25-V            | 25-C                   | F-25-C                      | 25-M     | F-25-M       |
| HAGER        | 4501 RIM                | 4501 RIM FR | 4501 SVR     | 4501 SVR FR       | 4500 CVR               | 4500 CVR FR                 | 4500 MOR | 4500 MOR FR  |
| SARGENT®     | 8800                    | 12-8800     | 8700         | 12-8700           | 8600                   | 12-8600                     | 8900     | 12-8900      |
| VON DUPRIN   | 98/99                   | 98/99-F     | 98/9927      | 98/9927-F         | 98/9947                | 98/9947-F                   | 98/9975  | 98/9975-F    |
| YALE         | 7100                    | 7100F       | 7110         | 7110F             | 7160                   | 7160F                       | 7130     | 7130F        |

### 6400 Narrow Stile Cross Reference

| MANUFACTURER | EXIT DEVICE SERIES/TYPE |             |              |                   |                        |                             |  |
|--------------|-------------------------|-------------|--------------|-------------------|------------------------|-----------------------------|--|
|              | RIM                     | RIM FIRE    | VERTICAL ROD | VERTICAL ROD FIRE | CONCEALED VERTICAL ROD | CONCEALED VERTICAL ROD FIRE |  |
| PDQ          | 6400R                   | 6400RF      | 6400V        | 6400VF            | 6400C                  | 6400CF                      |  |
| CORBIN       | ED4200                  | ED4200MA    | ED4400       | ED4400MA          | ED4800                 | ED4800MA                    |  |
| DORMA        | 9700                    | F9700       | 9800         | F9800             | 9600                   | F9600                       |  |
| FALCON       | 24-R                    | F-24-R      | 24-V         | F-24-V            | 24-C                   | F-24-C                      |  |
| HAGER        | 4601 RIM                | 4601 RIM FR | 4601 SVR     | 4601 SVR FR       | 4601 CVR               | 4601 CVR FR                 |  |
| SARGENT®     | 8500                    | 12-8500     | N/A          | N/A               | 8400                   | 12-8400                     |  |
| VON DUPRIN   | 33A/35A                 | 33A/35A-F   | 3327A/3527A  | 3327A/3527A-F     | 3347A/3547A            | 3347A/3547A-F               |  |
| YALE         | 7200                    | 7200F       | 7210         | 7210F             | 7220                   | 7220F                       |  |

## Lever Options

PHL



BSN



MIA



ORL



CHI



LAX



Not all products are available in levers shown.

## Finish Options

### 605

Bright Brass

Gold anodized aluminum rail (matte), push bar sides and dogging filler Polished brass plated cast head cover and end caps. Polished brass plated heavy gauge stamped push bar face.

### 606

Satin Brass

Gold anodized aluminum rail (matte), push bar sides and dogging filler Brushed brass plated cast head cover and end caps. Brushed brass plated heavy gauge stamped push bar face.

### 613

Dark Bronze

Dark bronze anodized aluminum rail, push bar sides and dogging filler Powder coated cast head cover and end caps. Powder coated heavy gauge stamped push bar face.

### 622

Flat Black

Black anodized aluminum rail, push bar sides and dogging filler Powder coated cast head cover and end caps. Powder coated heavy gauge stamped push bar face

### 625

Bright Chrome

Clear anodized aluminum rail (matte), push bar sides and dogging filler Polished chrome plated cast head cover and end caps. Polished chrome plated heavy gauge stamped push bar face.

### 626

Satin Chrome

Clear anodized aluminum rail (matte), push bar sides and dogging filler Brushed chrome plated cast head cover and end caps. Brushed chrome plated heavy gauge stamped push bar face.

### 630

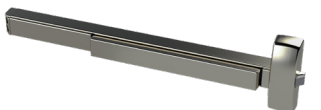
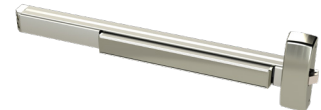
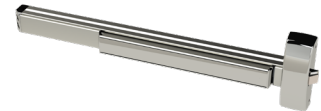
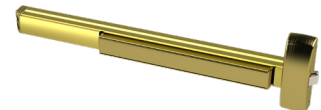
Satin Stainless

Clear anodized aluminum rail (matte), push bar sides and dogging filler Plated (stainless look) cast head cover and end caps. Brushed stainless heavy gauge stamped push bar face.

### 630F

Full Satin Stainless

Brushed stainless fully clad rail, push bar and dogging filler Plated (stainless look) cast head cover and end caps.



Finish designation does not specify base material, only color and appearance. Not all products are available in all finishes listed.



# SECURING CONFIDENCE OPENING POSSIBILITIES

**Phone:** 800.441.9692

**Tech Support:** 833.273.7832

**Email:** [help@pdqlocks.com](mailto:help@pdqlocks.com)

**Headquarters:** 2230 Embassy Drive, Lancaster, PA 17603 |  
P.O. Box 6426, Lancaster, PA 17607

**Regional Distribution Centers:** Lancaster, PA | Norcross, GA |  
Kansas City, MO | Auburn, WA

[pdqlocks.com](https://pdqlocks.com)

LT 2097 9-2022

©PDQ Industries 2022